

Broads Authority: Local Development Framework

Annual Monitoring Report 2007 - 2008



Autumn 2008

BROADS AUTHORITY ANNUAL MONITORING REPORT 2007 - 2008

A1. Requirement for Annual Monitoring Report

A1.1 The Annual Monitoring Report¹ is a report submitted to the government by a local planning authority to assess the progress and the effectiveness of a Local Development Framework.

A1.2 The Annual Monitoring Report will assess:

- are policies achieving their objectives and is sustainable development being delivered?
- have policies had intended consequences?
- are the assumptions and objectives behind policies still relevant?
- are the targets set in the LDF being achieved?

A1.3 To achieve this goal, the AMR includes a range of local and standard indicators. It should also highlight whether any adjustments to the Local Development Scheme are required. The AMR must be based upon the preceding financial period 1 April to 31 March and be submitted to the Secretary of State no later than the end of the following December. This is the fourth AMR produced by the Broads Authority.

A1.4 Some sections submitted in this year's report are merely redrafted and updated from previous years, as data is not often updated or monitored annually. However the section on the wider performance monitoring framework is updated from last year, when it was first introduced. This section has been built around the special and statutory purposes of the Authority and the State of the Park Report. The Government allows and encourages the Local Planning Authority to develop such wider performance monitoring to measure aspects of the LDF that the compulsory Core Output Indicators do not.

A2. Purpose of Local Development Framework Monitoring

A2.1 The aim of setting up a monitoring system is to help the Authority understand the wider social, environmental and economic issues affecting the area and the key drivers of spatial change. We are required to:

- review actual progress in terms of local development document preparation against the timetable and milestones in the most recent local development scheme;
- assess the extent to which policies in local development documents are being implemented;
- where policies are not being implemented, explain why and to set out what steps are to be taken to ensure that the policy is implemented; or whether the policy is to be amended or replaced;
- identify the significant effects of implementing policies in local development documents and whether they are as intended; and
- set out whether policies are to be amended or replaced.

¹ Government requires local planning authorities (LPAs) to produce an annual monitoring report (AMR). Section 35 of the Planning and Compulsory Purchase Act 2004 ("the Act") requires every local planning authority to make an annual report to the Secretary of State containing information on the implementation of the local development scheme (LDS) and the extent to which the policies set out in local development documents are being achieved. The requirements are set out in the Town and Country Planning (Local Development) (England) Regulations, 2004, in Planning Policy Statement 12 and in Local Development Framework Monitoring: A good practice guide.

A2.2 Four broad principles underpin the development of a monitoring framework:

- making use of existing information
- being consistent with national and regional monitoring
- setting objectives, policies, targets and indicators
- taking a forward looking approach.

A2.3 The Authority's fourth AMR under the 2004 Planning Act covers the period up to March 31st 2008 (for those indices which are regularly updated) and will, similar to previous reports, cover the following topics:

Chapter 1	Introduction – Spatial Portrait, Vision, Issues, Challenges and Opportunities
Chapter 2	Performance Monitoring Framework: Policy, Performance and Effects
Chapter 3	Local Development Scheme, SCI, Core Strategy, Development Control DPD
Chapter 4	Sustainability Appraisal
Chapter 5	Local Development Framework and Local Plan Implementation
Chapter 6	Summary

Appendices:

Appendix 1	Core Output Indicator table
Appendix 2	LDF Biodiversity Indicators
Appendix 3	Sustainability Indicators as set out in the Sustainable Appraisal Environmental Report
Appendix 4	Planning Applications objected to by the Environment Agency on Flood Risk Grounds.

A2.4 If you have any comments on this AMR, or if there is any information you would like to see included in a future report, please email ldf@broads-authority.gov.uk

Chapter 1

INTRODUCTION

(i) Spatial Portrait of the Norfolk and Suffolk Broads

Location

- 1.1 The Norfolk and Suffolk Broads is a member of the National Park family, covering 303 km² and with just over 6,000 residents². It is a rural area³ and overlaps with six other local authority boundaries⁴. There are no major settlements included within the Broads boundary, only parts of villages and the outer fringes of Norwich, Great Yarmouth, Lowestoft and market towns. The boundary is in fact tightly drawn around the flood plains and lower reaches of three main rivers – the Bure, Yare and Waveney. Map 1 sets out the Broads Authority Executive Boundary and Table 1 sets out the Broads Authority key facts that illustrate the Broads Profile.

Land Use and Conservation

- 1.2 As well as having the same status as a National Park, the Broads has 9 Special Areas of Conservation or of special protection (internationally recognised), 29 Sites of Special Scientific Interest (SSSIs), and National Nature Reserves. There are 17km of public bridleways across the area, which is considered to be the UK's premier wetland and is part of a global network of protected landscapes. It has a mostly undeveloped landscape of water, fens, marshes and woodland. The only coastal strip (2.7km long at Winterton) is part of the North Norfolk Coast AONB. This extensive inland waterway system, comprising 190km of navigable rivers and lakes, or broads, is not only ecologically important but a major attraction for recreational users.
- 1.3 The Broads has 12 Scheduled Ancient Monuments, 21 Conservation Areas, 258 listed buildings and over 1000 records on the Site and Monuments Register. The landscape reflects historic patterns of human activity over hundreds over years, and contains landscape features particular to the area include drainage mills, waterside chalets, boatyards and staithe and villages with houses of brick and thatch. This unique environment has a high economic value, attracting business and tourism to the area.

Settlements

- 1.4 There are over 2,550 households in the Broads executive area plus approximately 470 classed as occupying holiday homes or second residences⁵. Despite increasing development pressures, over 80% of new housing is built on brownfield sites⁶. Settlements in the Broads are often dominated by the importance of the waterways, with their associated trades and activities. Villages are centred around the staithe with building designs reflecting their special functions, whether connected with riverside trade or management of the land.
- 1.5 As Norfolk is in need of affordable housing in rural areas, the County Council is talking to District Councils to identify suitable land in villages. Norfolk County Council is also boosting its contribution to affordable housing by earmarking part of its Council Tax income from second homes, according to the proportion of this element in any given area. The high cost

² Population 6,127 as of 2006.

³ Urban areas cover 698ha, 2.3% of total land area.

⁴ The six local councils are Norwich City, Waveney, Broadland, Great Yarmouth, North Norfolk and South Norfolk. (also Norfolk and Suffolk County Councils)

⁵ Household counts from 2001 Census: 120 vacant, 466 no permanent res. (unadjusted for extra pop).

⁶ 100% of approved housing planning applications in 2007 / 2008 were on previously developed land.

of housing could impact upon the economy of the Broads as it affects those working in traditional trades such as agriculture and boat manufacture. Reed and Sedge cutters have also identified that proximity of housing to their reed and sedge beds is important.

Habitats

- 1.6 The Broads contains a mosaic of habitats that give the area a high conservation value. The wetlands⁷ are essentially a freshwater system, becoming more brackish towards the coast. As well as rivers, estuaries and broads, there are fens, carr woodland and grazing marshes. The 29 SSSIs cover about a quarter of the Broads, and one-third of these sites are also designated as National Nature Reserves⁸.
- 1.7 Undrained peatland covers 17% of the land – 1629ha is fen and 3000ha is woodland. These areas contain the largest expanse of species-rich fen in lowland Britain as well as the most extensive tract of wet woodland within the region. Grazing marshes account for 13500 ha (45%). These habitats support a wealth of species and require active management to maintain their character. A Broads Biodiversity Action Plan is currently in preparation.
- 1.8 The Broads is threatened by water resource problems: low river flows and depleted groundwater; and the threat of increased salt water incursion and tidal saltwater flooding. The main threat to water quality comes from diffuse pollution of groundwater, often arising from outside the Broads boundary, e.g. farm and road run-off.

Transport

- 1.9 There are 18 community transport schemes based in and around Broads' villages⁹. Commuters living in the Broads use bus services less than in the rest of Norfolk and the proportion of residents owning cars increases accordingly¹⁰. There is an average of 3% yearly growth in traffic in the Broads area¹¹.
- 1.10 A new northern distributor road is proposed by Norfolk County Council, which would extend from the existing A47 and link up the main routes around the north side of Norwich. It is subject to a number of issues, including funding. This may affect traffic flows between Norwich and other centres including Great Yarmouth, which lie to the west and east of the Broads. The A47 is the only A road which provides good east – west links and there is a proposal to improve one short stretch of this road to dual carriageway between Blofield and North Burlingham. However there are few north–south routes as the rivers form natural barriers to travel in this direction.
- 1.11 There are three railway lines that cross the Broads and these serve many of the smaller settlements between Norwich, Great Yarmouth and Lowestoft. The Bittern line goes north from Norwich via Wroxham while the Wherry Line service travels from Norwich to Great Yarmouth and Lowestoft. There is also a route from Lowestoft to Ipswich that connects with a London Liverpool Street service and arrives in London in under three hours.
- 1.12 Norwich International Airport is within a few miles of the western edge of the Broads, and offers an increasing number of commercial and low cost flights. Stansted Airport is the other main airport for the region and is less than two hours away by train or road.

⁷ Inland water covers 926ha, 3% of total land area.

⁸ The 29 SSSIs cover 24% of area with 7,176ha and NNRs cover 2,297ha.

⁹ 3 in Suffolk, 15 in Norfolk, as listed in the County Council community transport guides.

¹⁰ 2.6% commuting by bus in Broads area, 5% in Norfolk. Private car ownership (one or more) is 89% of households in Broads, compared to 79% in Norfolk. Census 2001.

¹¹ Norfolk County Council traffic monitoring report, 2004.

Crime

- 1.13 Norfolk Constabulary has again seen substantial drops in target crime across the county in the key areas of robbery, violence against the person and vehicle crime. Nationally, crime has also been falling over recent years¹² and the Broads area is one with relatively low crime levels.

Economy

- 1.14 The Broads is a singular navigable wetland environment and this results in a local economy that is driven by tourism. The hire boat industry is the single most important provider of holidays, accounting for 4.4 million nights¹³. Tourism also benefits the shops, restaurants, hotels and attractions in the area, with an overall value to the Broads of £146.6 million. The leisure marine industry includes boat building and equipment manufacturers as well as the inland hire and charter companies. Agriculture has also been a significant part of the economy but is having to diversify and change its practices to survive. Other local skills, such as thatching and mill wrighting remain a small but important part of life in the Broads. Norfolk is the last place in the UK where reed is cut commercially for use in thatching. There is considerable pressure in certain areas on the use of water space for navigation, recreation and nature conservation purposes.

Population (Census data and indicators)

- 1.15 The Broads area within Norfolk has similar social characteristics to the county as a whole. There are comparable employment levels, with the same percentage of workers in agriculture. The same proportion of people in both areas class their health as “good”¹⁴ and there is an identical average of 2.3 people per household. Norfolk, Suffolk and the Broads all have 97 percent white British residents.
- 1.16 Differences with the rest of Norfolk include a rather older population¹⁵ and a higher percentage of residents providing unpaid care¹⁶. Using health indicators, the Broads is not considered a deprived area¹⁷. In terms of severity of multiple deprivation, Broadland District Council is among the 10 per cent least deprived of all non-metropolitan Districts in England, with South Norfolk only just outside this category¹⁸.

¹² These latest figures are from the Home Office Crime Statistics which look at crime levels nationally from April 2007 to March 2008 and include both Police statistics and the British Crime Survey results.

¹³ East of England Tourist Board study, 1998.

¹⁴ Employment levels 61% (as % working age in employment), 4% (% of pop) work in agriculture and health classed as “good” 66% in Norfolk and 67% Broads area. Census data from NCC.

¹⁵ 11% aged 75+ in Broads, 7.8% in Norfolk, 7.5% in UK. Census 2001.

¹⁶ 12% in Broads compared to 10% in Norfolk.

¹⁷ “It is primarily on the health indicators where Norfolk rates relatively unfavourably in the Region, with five Districts among the ten highest ranked on limiting long-term illness, general health ‘not good’, people providing unpaid care, and people providing unpaid care 50 or more hours a week. Great Yarmouth ranks second in the Region on three of these measures and seventh on the remaining one. King’s Lynn and West Norfolk ranks third on the last of these measures and fifth on the three others.” Norfolk County Council.

¹⁸ English Indices of Deprivation 2004, published in June 2004 by the ODPM. The new Index of Multiple Deprivation (or IMD) is produced as a composite score from seven ‘domain’ indices: income; employment; health deprivation and disability; education, skills and training; barriers to housing and services; crime and disorder; and the living environment. Taken from NCC’s Deprivation in Norfolk 2004.

(ii) **Vision for the Broads**

- 1.17 A shared vision for the Broads has been developed from that in the 1997 Broads Plan, based on feedback received from stakeholders. During the life of the 2004 Broads Plan, this vision will be reviewed and developed in more visual ways.

The Broads . . .

An unrivalled naturally functioning wetland ecosystem of international natural and cultural importance, with a landscape that: comprises a mosaic of interconnecting rivers and shallow lakes, fens, marshes, wet woodlands, mud-flats and coastal dunes; supports a wealth of plants and animals; and reflects historic patterns of human activity over many hundreds of years.

A place where people live or work in harmony with its natural and cultural qualities and where the local economy is sustained through small and medium-sized enterprises: building and hiring boats; providing services and accommodation, and producing food and other products locally to meet the needs of visitors; harvesting the fens; and farming livestock on the marshes.

A place where people come to enjoy quietly the special qualities of this wetland landscape: exploring the waterways by boat; exploring on land the extensive network of footpaths, cycle routes and bridleways; and pursuing a range of recreational activities that are compatible with its special qualities, environmentally sensitive and socially acceptable, such as sailing, canoeing, fishing, bird-watching and visiting historic sites.

A changing place that, in response to increasing climate and human influences, reflects an increasingly harmonious interaction of people with nature, where local communities enjoy economic prosperity through engagement with the natural environment. A place where opportunities are sought to enhance and expand the wetland ecosystem, while also seeking to provide wider associated social and cultural benefits, such as flood management and quiet areas for peaceful recreation.

And, importantly, a place treasured for its seclusion and wildness and which provides, in the words of the late Norfolk naturalist Ted Ellis, 'a breathing space for the cure of souls'.

- 1.18 This vision has been carried forward into the adopted Core Strategy to inform the direction of the whole Broads Local Development Framework. It was also translated into the Spatial Strategy, the overarching strategy for the Core Strategy policies and the subsequent Local Development Documents.

TABLE 1**BROADS PROFILE**

	Facts	Figures	Data Sources
A.	Broads Authority Executive Area Population within Executive Area (2001)	302.9 sq km 6,127	MLCNP (1988) 2006 mid-year estimates
B.	Area Owned by Broads Authority % of Executive Area owned by Broads Authority	1.55 sq km 0.30%	Broads Authority Broads Authority
C.	Resident Population 2006 % population aged under 16 years % population aged 16-59/64 % population aged 60/65 and over	6,127 12% 63% 25%	2006 mid-year estimates 2006 mid-year estimates 2006 mid-year estimates 2006 mid-year estimates
D.	No settlements with 3,000 population	0	Not Applicable
E.	No of parishes in Executive Area	93	2001 Census
F.	No of households (2001) % Owner Occupied % Private Rented % Housing Associations % Local Authority % Other	2,553 72% 17% 2% 3% 6%	2001 Census 2001 Census 2001 Census 2001 Census 2001 Census 2001 Census
G.	No of Persons Economically Active (2001)	2719	2001 Census
H.	Area of Woodland/Dense Scrub Area of Moorland/Heather Area of Marsh/Bog Area of Open Water Area of Grass Pasture Area of Arable/Cultivated Land Area of Other Designations	3,589 ha 13 ha 2,289 ha 1,971 ha 13,083 ha 8,109 ha 1,238 ha	MLCNP (1988) MLCNP (1988) MLCNP (1988) MLCNP (1988) MLCNP (1988) MLCNP (1988) MLCNP (1988)
I.	Area of Special Area of Conservation** (Natura 2000 Sites) Area of Special Protection Areas** (Natura 2000 Sites) Sensitive Marine Area Area of SSSI Area of National Nature Reserves Area of Local Nature Reserves	5,929 ha 6,651 ha 0 ha 7,176 ha 2,297 ha 467 ha	English Nature & Broads Authority English Nature & Broads Authority English Nature & Broads Authority English Nature & Broads Authority English Nature & Broads Authority English Nature & Broads Authority

J.	Length of Coastline Length of Drystone Walls Length of Hedgerows Length of River/Lake/Pond Banks (each side of bank) Length of Other Boundaries	2.7 km 0 km 371 km 3,070 km 2,237 km	OS Leisure Map MLCNP (1988) MLCNP (1988) Broads Authority & OS (1994) MLCNP (1988)
K.	No of Scheduled Ancient Monuments No of Conservation Areas No of:- Listed Buildings - Grade I Listed Buildings - Grade II* Listed Buildings - Grade II	12 21 7 35 216	Broads Authority Broads Authority Broads Authority Broads Authority Broads Authority
L.	Length of Public Footpaths Length of Public Bridleways Length Of Other PROW	293.5 km 17 km 0 km	Broads Authority Broads Authority Broads Authority
M.	Estimated no of Visitor Days % Day Visitors % Staying Visitors	5.4 million 30% 70%	Broads Authority Broads Authority Broads Authority
N.	No of Planning and Related Applications Received No of Requests for Pre-Application Advice from Agents/Applicants	273 374	ODPM Returns (2007/08) ODPM Returns (2007/08)
O.	No of Broads Authority Members	21	The Norfolk & Suffolk Broads Act 1988 (as amended)
** These areas are also SSSIs			

Source: Broads Authority Business Plan 2007/08 - 2009/10 (incorporating the Best Value Performance Plan).

(iii) Issues, challenges and opportunities

1.19 The following contextual information and the issues arising have contributed to work on the Development Policies DPD and the final adoption of the Core Strategy

Flood alleviation and climate change

1.20 As a low-lying wetland area situated almost wholly within the flood plains of the rivers Yare, Bure, Ant, Thurne and Waveney, over 95% of the Broads area is at risk from flooding. Flooding can occur as a result of high river flows or, more frequently, a combination of high sea levels and high river levels. There is also a specific risk from high sea levels due to storm surges in the southern North Sea at the point where the Broads Authority boundary reaches the coast between Winterton and Horsey. The risk of flooding will increase with sea level rise, more intense rainfall and the other changes predicted as a consequence of climate change. Storm surges are also expected to become more frequent due to climate change and a severe example in November 2007 only narrowly avoided creating widespread flooding in the Broads. The impacts of such flooding can be devastating both to communities and the wildlife and bio-diversity within the Broads, with the latter being particularly affected by saline intrusion into the freshwater system. Issues include:

- Addressing and planning for the impacts of sea level rise and climate change
 - Flood defence and the impacts of and opportunities under the Broads Flood Alleviation Project (BFAP)
 - Development within the flood plan
- 1.21 The revised PPS 25 was published in December 2006, while the Good Practice Guide to accompany it was published in June 2008. A Strategic Flood Risk Assessment (SFRA) was prepared by consultants jointly commissioned by the Broads Authority, Broadland, North Norfolk, Norwich and South Norfolk District Councils. The SFRA informs the now adopted Supplementary Planning Document on 'Flood Risk and Development', which provides an important source of guidance for the management of development in these areas.
- 1.22 A sustainable design guide, published in summer 2006, is now available on line or as a booklet and gives design guidance for various sustainable solutions to issues affecting the Broads specifically¹⁹.

The Broads as a living working landscape

- 1.23 The Broads is designated as an area with National Park status in recognition of the national importance of the area for its landscape value. There is a short coastal strip which overlaps with part of the North Norfolk Coast Area of Outstanding Natural Beauty (AONB) and in this area the AONB Management Plan is a consideration.
- 1.24 'Landscape' as a term is multi-faceted and covers more than just the view that we see. It also includes components such as visual amenity, character, integrity and sensory factors, which are harder to identify and quantify, and consequently more sensitive and vulnerable to change. Issues include:
- Protecting the value of the landscape as a whole
 - Preserving local distinctiveness and character
 - Protecting tranquillity
 - Protecting the landscape whilst allowing essential development
- 1.25 The Authority completed a landscape character assessment in October 2006, based on extensive desk based research on documents like historical maps, topography data and field work. This identifies 30 character areas and is now used to inform planning control decisions.

The historic environment

- 1.26 The built and historic environment are important parts of the cultural landscape and reflect the activities of people living and working in the Broads over time; for example, there are over 70 surviving drainage mills. Together these contribute significantly to the character and distinctiveness of the Broads. Issues include:
- Protecting and enhancing the historic and cultural landscape
 - Preserving key landmark buildings and heritage features
 - Developing new uses for cherished buildings

Natural Resources

¹⁹ 'Sustainability Guide, LSI architects for Broads Authority, 2006

- 1.27 The Broads has been designated as National Park status in recognition of the national importance of the area for its nature conservation value, being the largest and most important wetland in the UK.
- 1.28 There are 29 Sites of Special Scientific Interest (SSSIs) which cover about 24% of the Broads Authority Executive area and of which one-third are designated National Nature Reserves (NNR). Virtually the entire SSSI network is designated as internationally important for nature conservation and has either Special Protection Area or Special Area of Conservation (SAC) status under European legislation; a large number of SPAs are also Ramsar sites. A Broads Biodiversity Action Plan is being prepared, which will highlight priorities more clearly. Issues include:
- Habitat protection, restoration and recreation
 - Impact of nature designations and international obligations
 - Promoting wildlife gain through management
 - Improving bio-diversity

Development, the economy and sustainable communities

- 1.29 The economy in the Broads is driven largely by the tourism industry, with an annual value in 1998 of around £146.6M. The value of this income locally is of huge significance in supporting local facilities, providing employment and sustaining communities.
- 1.30 Boatbuilding is also a significant economic sector within the Broads and the region generally - in the East of England, the British Marine Federation (BMF) data shows that the total revenue from the leisure marine industry was £363.6m in 2006/7, which is 12.3% of the UK total. It estimated that the industry also supports tourism-related spending of £137m in the East of England and a local economy totalling some 3,900 jobs across the region.
- 1.31 Locally, the BMF figures show that around 1,133 people were permanently employed in the marine industry within the Broads area.
- 1.32 Agriculture is the third main economic sector in the Broads, taking advantage of the flat and fertile river valleys of the Broads area. Much of the land is farmed under one of the agricultural designations aimed at landscape and/or environmental conservation. One issue arising from this is vulnerability of agricultural activity to changes in response to variation in the agricultural support policies.
- 1.33 There have been major changes in the economic make-up of the Broads in the last 10 years, with a significant reduction in the size of the hire boat fleet and a growth in the numbers of private boats on the Broads. There has also been an increase in boat building activities, whilst changes in agricultural practice and support have affected the farming communities within the area.
- 1.34 Issues include:
- Addressing social inclusion and access
 - Promoting the health of the local economy
 - Supporting economic regeneration and sustainability
 - Addressing the future of the hire boat industry and local business in general
 - Provision of community facilities and services

Tourism and recreation

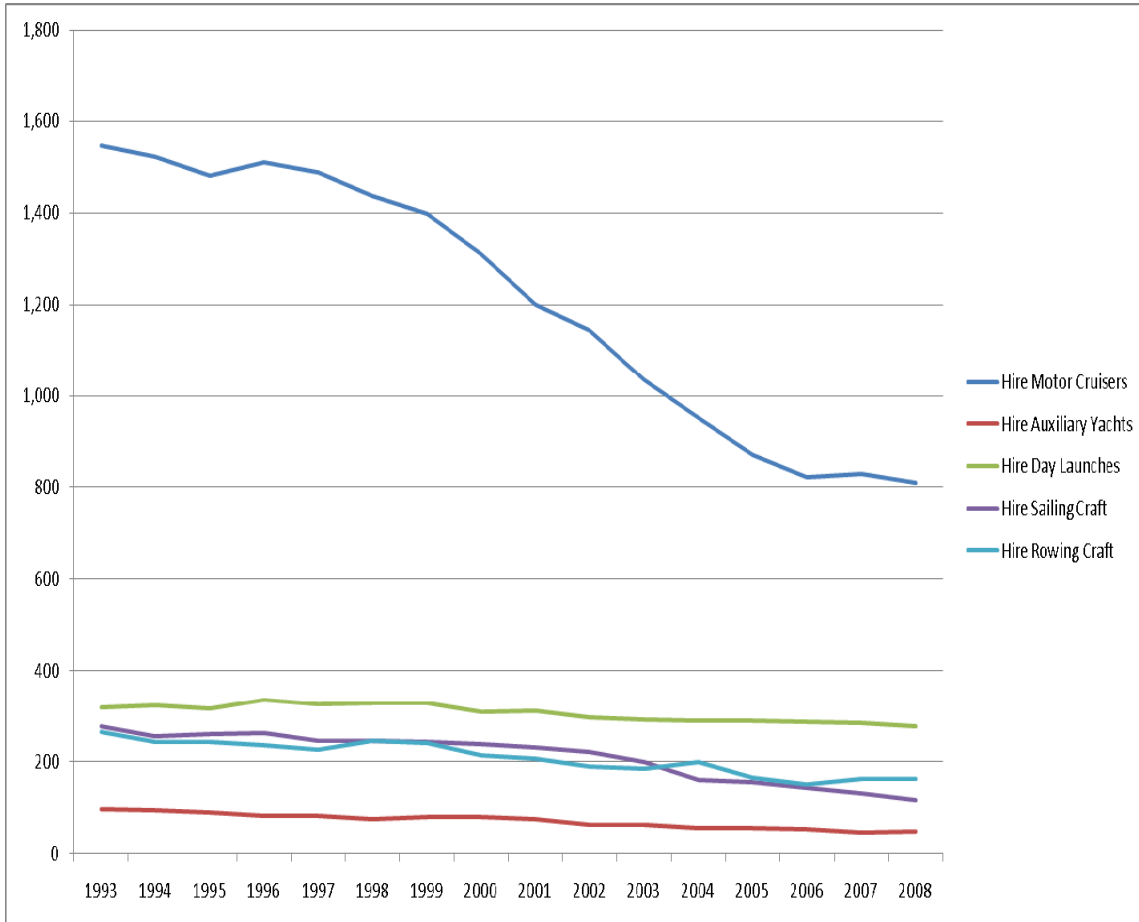
- 1.35 One of the statutory purposes of the Broads as a National Park is the promotion of the enjoyment of the area by the public and the Broads is of national importance for its recreational value. Tourism makes a major contribution to the local economy. An East of

England Tourist Board study showed that the overall value of tourism to the Broads in 1998 was about £146.6M and that this supported the equivalent of 3,107 full-time jobs.

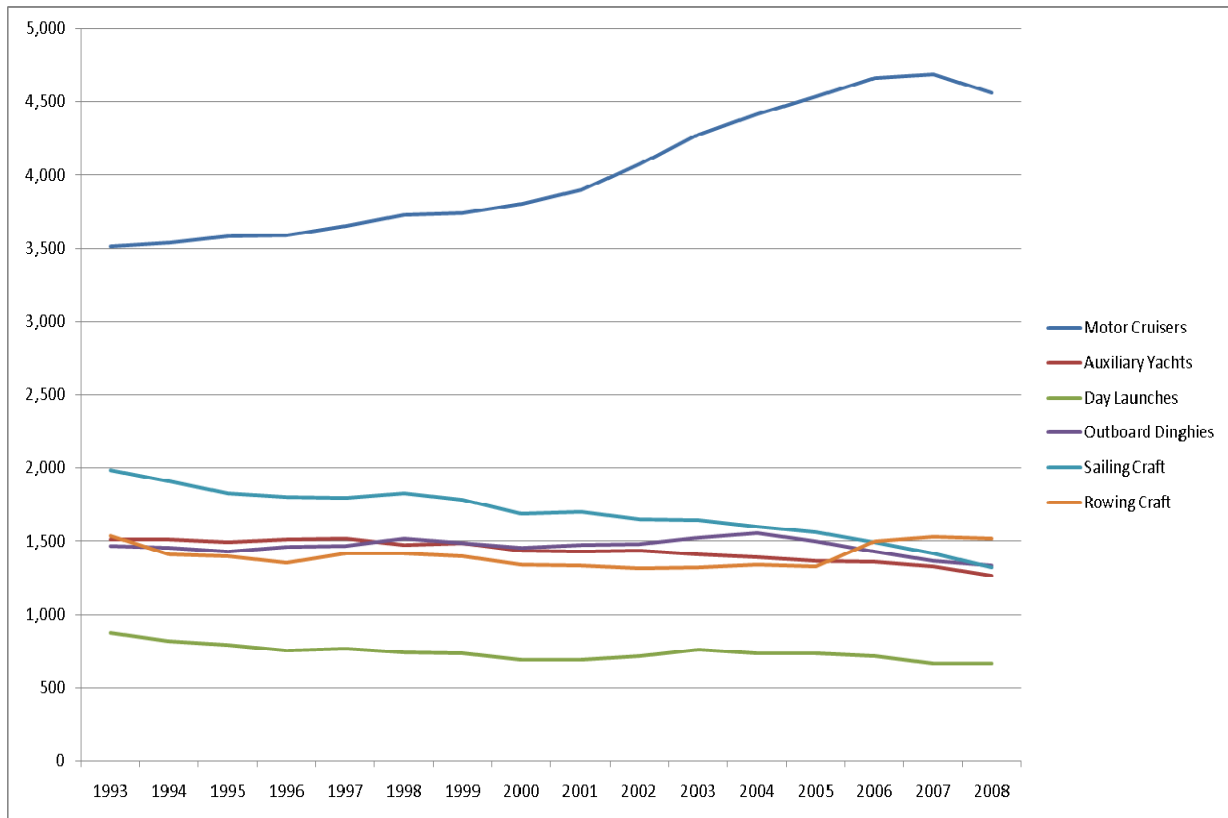
1.36 As a major tourist destination, British Marine Federation figures show that the wider Broads area contributes 25% of the regional employment in the leisure marine sector. The 'inland hire and charter' boat business represents some 30% of the turnover of the whole leisure marine sector in the area.

Fig 1

Hire Boat Numbers 1993 - 2008



Private Boat Numbers 1993 – 2008



Note: The 2008 figures are predictions based on 08 to 31 August plus actual in Sep 07 and Oct 07 (boat figures are produced 1 November each season). Auxiliary yacht is defined as a yacht with a motor of 10 hp or less, a non powered yacht would appear in the sailing category and whereas a yacht with a motor of more than 10hp would appear in the motor category. For more info contact: Bill.housden@broads-authority.gov.uk

1.37 There have, however, been major changes to the pattern of tourism in recently years, in particular the hire boat fleet has more than halved since the mid- 1980's. Addressing these changes is a major challenge. Issues include:

- Managing development pressures related to visitors and tourism
- Integrating/reconciling the needs of recreation and conservation
- Protecting public and parish staites
- Addressing the shortage of short and long term moorings
- Managing sport and activities in the countryside
- Improving the quality of the physical infrastructure (river frontages, access points, hire boats)
- Ensuring sustainability of the tourism industry
- Promoting diversification within the tourism industry

1.38 Since 2005 trends in boat numbers and in particular the divergence of hire and private boats has continued, although recently the private boat market has also declined slightly. In 2006 boat tolls figures showed that private boat numbers had increased by 149 to 11,329, however at the start of the 2007 season this dropped to back 11,133 and has continued to fall in 2008 (see graph above), whereas hire boats dropped from 1,590 to 1,504 between 2005 and 2007. Less hire and more private boats create different patterns of use around

the Broads system, with more boats requiring permanent moorings during the winter and less boats available to hire in the peak season.

Housing

- 1.39 Having the same status as a National Park, the Broads Authority has no requirement for additional housing development under the Regional Spatial Strategy, and therefore no growth is allocated or accounted for in later sections. Nor does the Authority have a housing function or department to manage housing need, unlike the constituent District Councils, who provide this service for the Broads area. As the Broads is a historic tourist destination, the area is characterised by a significant amount of holiday accommodation, including second homes.
- 1.40 Typically, housing development in the Broads comprises primarily replacement dwellings or conversion to dwellings and small infill development. This applies both to permanent residential properties and holiday accommodation. A small number of new houses are permitted each year (12 were permitted in 2007/8). A major constraint on housing development, particularly on small infill sites, is flood risk and there is a presumption in the Broads Local Plan against development on such sites unless it is providing for local housing need or is necessary for agricultural, forestry or boatyard staff. Holiday accommodation may also be appropriate in the flood plain due to the differing patterns of use. Issues include:
- The impact of second homes
 - Provision of affordable housing
 - The impact of development beyond the Broads Authority boundaries
 - Housing in the flood plain

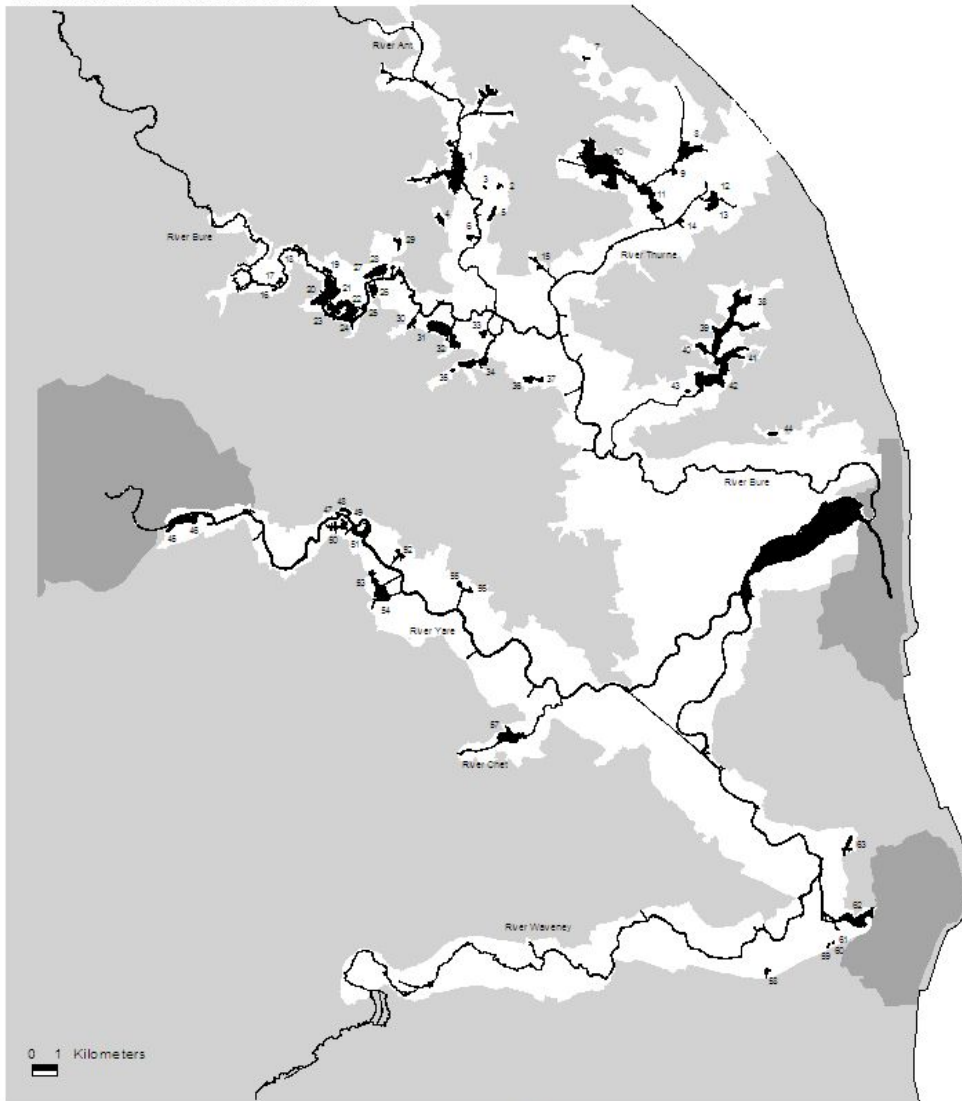
Access and Transport

- 1.41 The Broads area is crossed by a number of major transportation links, including the A47 trunk road east of Norwich and the A12 south of Great Yarmouth, and a number of other important roads, however as a predominantly rural area, access to the villages, rivers and Broads is usually off minor roads.
- 1.42 Due to the geography and network of waterways, much of the Broads area is also relatively difficult to access and the best – and sometimes only – way to reach many parts of the system is by water. Moreover links between land and water-based recreational provision are limited.
- 1.43 Ninety-four percent of visitors to the Broads arrive by private car, causing seasonal congestion during the summer travel period, particularly in and around towns acting as a focus for attractions and which provide easy access to the rivers or Broads (e.g. Great Yarmouth and Wroxham). The result is increased pressure on the area in terms of demands for visitor attractions, accommodation, road space and parking. This creates a contradictory impression to visitors who expect the Broads to be tranquil and not an area of dense traffic and congestion. Issues include:
- Provision of transport infrastructure
 - Maintaining public rights of way
 - Promoting alternative sustainable access to the Broads – eg cycle ways and footpaths

MAP 1

Data Sources:
 Broads Authority

© Crown copyright. All rights reserved. Broads Authority 002493.003



- | | | | |
|--------------------|--------------------------|----------------------------|------------------------------|
| 1 Barton Broad | 17 Belaugh Broad | 33 Ranworth Flood | 49 Brundall Inner Broad |
| 2 Catfield Broad | 18 Bridge Broad | 34 South Walsham Broad | 50 Surlingham Broad |
| 3 Irstead Holmes | 19 Snape's Water | 35 Sotshole Broad | 51 Bargate Broad |
| 4 Alderfen Broad | 20 Wroxham Broad | 36 Upton Great Broad | 52 Strumpshaw Broad |
| 5 Cromes Broad | 21 Hudson's Bay | 37 Upton Little Broad | 53 Wheatfen broad & channels |
| 6 Reedham Water | 22 Hoveton Great Broad | 38 Ormesby Broad | 54 Rookland Broad |
| 7 Calthorpe Broad | 23 Salhouse Little Broad | 39 Rollesby Broad | 55 Buckingham Broad |
| 8 Horsey Mere | 24 Salhouse Broad | 40 Lily Broad | 56 Hassingham Broad |
| 9 Blackfleet Broad | 25 Devil's Hole | 41 Ormesby Little Broad | 57 Hardley Flood |
| 10 Hickling Broad | 26 Decoy Broad | 42 Filby Broad | 58 Barnby Broad |
| 11 Heigham Sound | 27 Pound End | 43 Little Broad | 59 Woolner's Carr |
| 12 Martham North | 28 Hoveton Little Broad | 44 Mautby Decoy | 60 Round Water |
| 13 Martham South | 29 Burntfen Broad | 45 Whitingham Little Broad | 61 Sprats Water |
| 14 Martham Pits | 30 Cockshoat Broad | 46 Whitingham Great Broad | 62 Oulton Broad |
| 15 Womack Water | 31 Ranworth Broad | 47 Brundall Outer Broad | 63 Flixton Decoy |
| 16 Norton's Broad | 32 Malthouse Broad | 48 Brundall Gardens Lake | |

Chapter 2

PERFORMANCE MONITORING FRAMEWORK: POLICY, PERFORMANCE AND EFFECTS

- 2.1 The three previous versions of the Annual Monitoring Report have not included any detailed data in this section on developing a set of non-prescriptive indicators definable by the Local Planning Authority itself. The aim of this section is to offer an opportunity to monitor the policy performance and effects of the Local Plan and emerging Local Development Framework with a wider set of indicators than the mandatory Core Output Indicators. This year however more of an effort has been made to develop a performance framework for the Broads area building on the work on the monitoring of the management plan through the State of the Park report and the Sustainability Appraisal indicators that informed the production of Local Development Documents. Unfortunately some planning information is still unavailable due to lack of staff for surveys of completions, for example.
- 2.2 Efforts have been made to present Broads specific data wherever possible, however very few data sets are actually available using the Authority boundary. Typically data is only available by the administrative boundaries of adjoining authorities, county, district or city councils, and often is not presented in a way that can be easily disaggregated. This is further complicated because the Authority does not include whole parishes or wards, covering these areas only partially and also often not including whole settlements.
- 2.3 The focus of this 'user defined' performance framework here has been on the delivery of the Authority's purposes and duties where these are relevant to and deliverable through the Local Development Framework. Because of the Broads Authority's status similar to that of a National Park Authority and having no housing or employment objectives, this monitoring framework has been focused around factors the Broads LDF can influence or actively seeks to influence, unlike many of those required by the National Core Output Indicators.
- 2.4 The Broads Authority like the other National Park Authorities has to produce a management plan. The latest version, known as the 'Broads Plan', was published in 2004. This plan sets out a vision with guiding principles and a range of management priority objectives under four key headings. When the Broads Plan was published it was intended that the objectives should be monitored in various ways, one of which would be a 'State of the Park' report. Similar reports are published by other National Park Authorities and provide a useful benchmarking exercise that can provide a range of baseline data on the environment, economy and local communities, and the Broads Authority is now in process of producing one. Many of the aspects covered in the AMR will be useful for any State of the Park report and vice-versa. The baseline and trend analysis which could be set out in a State of the Park report could also be presented in the AMR. The Authority has developed a range of indicators to monitor the Broads Plan with partners at the Broads Plan Advisory group meetings and developed a State of the Park report. Table 10 at the end of this chapter provides an overview of the different performance monitoring systems and what each aims to achieve.

Performance Indicators

- 2.5 In terms of local development frameworks, three types of indicators are identified, contextual, output indicators and significant effects indicators. Firstly, *contextual indicators* describe the wider social, environmental and economic background against which the local development framework policies operate. Secondly, *output indicators* are used to assess the performance of policies. Thirdly, *significant effects indicators* are used to assess the significant social, environmental and economic effects of policies. *Process targets* are used to monitor local development scheme delivery.

(i) Contextual Indicators

2.6 The purpose of contextual indicators is to provide a backdrop against which to consider the effects of policies and inform the interpretation of output and significant effects indicators. This reflects increasing recognition of the importance of taking into account the social, environmental and economic circumstances that exist within a locality. It is important to have regard to context when developing spatial plan policies and assessing their implementation. The table at the end of this section lists a set of relevant Broads specific contextual indicators which the Authority reports on an annual basis in its Best Value Performance Plan, where these indicators are relevant and provide context. In this year's report wider contextual indicators (i) and local indicators (ii a) have been combined into the one section below.

(ii) Output Indicators

2.7 The main purpose of output indicators is to measure quantifiable physical activities that are directly related to, and are a consequence of, the implementation of planning policies. The selection of output indicators will be guided by the key spatial and sustainability objectives of the local development framework. Consideration will be given in future AMRs to how indicators can be presented - e.g. on a thematic basis, supported by commentaries and visual material.

(ii a) Local Indicators

2.8 These should address the outputs of policies not covered by the core output indicators. In order to do this, links have been made with the State of the Park report, which monitors the objectives of the Broads Plan 2004. The choice of these indicators will vary according to particular local circumstances and issues and the local indicators identified in that report. Data such as that collected for the Best Value Performance Plan is also particularly relevant as local Broads output indicators. In this year's report local indicators (ii a) and wider contextual indicators (i) have been combined into one section below.

(ii b) Core Output Indicators

2.9 Authorities are required to monitor a set of local development framework core output indicators. As a consistent data source, the findings from these indicators can be used by regional planning bodies to build up a regional picture of spatial planning performance to inform the preparation of their annual monitoring reports. These indicators have to be collected on a consistent timeframe using a clearly identified set of definitions to allow meaningful analysis. To facilitate this, a detailed definition of the local development framework core indicators is set out by government. It is specifically stated that this should be collected at a district-wide level. However, the Government Office have confirmed that they wish it to be disaggregated and represented for the Broads Executive area. The Broads Authority can now provide some of these indicators as planning applications are now determined within the Broads Authority by its own staff, rather than being reliant on the adjoining districts. Completions can also be tracked this way to monitor outcomes on the ground – but this year no data is available. The Broads Authority does not have a housing target in the RSS so is not required to prepare a housing trajectory of its own.

Data for (i) Contextual Indicators and (ii a) Local indicators

Table 2 Demographic Structure

Population size	5,721 (as at 2001 Census)
Household types	2550 Households of which 466 Holiday home or second home.
Resident ethnic composition	97% White British

Socio-cultural issues: Quality of life

- 2.10 In social terms, the Broads area within Norfolk has similar characteristics to the county as a whole. There are comparable employment levels, with the same percentage of workers in agriculture. The same proportion of people in both areas class their health as “good”. Differences with the rest of Norfolk include a slightly older population profile and a higher percentage of residents providing unpaid care. There is an identical average of 2.3 persons per household. Norfolk, Suffolk and the Broads all have 97% white British residents.
- 2.11 ‘Indices of Multiple Deprivation’ (IMD) are often used to highlight those areas most likely to suffer from social exclusion, focusing on income, employment, health and disability, education skills and training, housing, and geographical access to services. Deprivation in rural areas is often closely linked to areas of sparse population, which can make it a difficult and costly issue to address.
- 2.12 In the IMD covering the Broads area, approximately seven ‘super output areas’ are ranked among the 20% most deprived nationally. In terms of severity of multiple deprivation, Broadland is among the 10% least deprived of all non-metropolitan areas in England, with South Norfolk just outside this category. In contrast, Great Yarmouth heads the table of deprivation.
- 2.13 The Broads is not considered a deprived area in terms of health indicators. Most of the Broads lies in the least deprived 40% of areas in England in terms of crime and disorder, with only 8 super output areas in the most 20% deprived nationally. Generally, the area benefits from low crime rates, with the highest recorded rates in wards adjacent to the urban areas of Norwich, Great Yarmouth, and Lowestoft. Norfolk Constabulary has reported substantial drops in target crime in recent years. The Broads navigation is patrolled by the Authority’s ranger service, supported in the peak season by Broadsbeat, a commercially sponsored Norfolk Constabulary initiative.

State of the Park Indicator: Broads Beat data on number of incidences of reported disturbance. -awaiting data. To be reported in future years.

Access: spatial connectivity, public transport levels and access to services

- 2.14 Rural areas often have very poor access to services because of the geographically sparse population, which is not always able to support village shops and rural post offices. In addition those residents without access to a car may struggle to access facilities in larger villages or market towns because of limited public transport options. Such facilities are also important to visitors to the Broads. Visitors require certain amenity facilities to support them during their stay and, where their needs are compatible with rural communities, can help sustain essential facilities. It is important that development permitted in the Broads builds on this relationship. Indeed one of the emerging policies in the Preferred Options Development Policies DPD contains a criterion to consider the existing community infrastructure and the potential for new community facilities enabled through development.
- 2.15 Table 3 overleaf is taken from the evidence library that is being developed for the LDF and shows the current range of facilities and services available in key Broads settlements.

Table 3 Accessibility of Services

Settlement	Population size	> 3,000	Regular access by public transport to larger settlement?	Shop selling daily needs goods	Tourist facilities
Belaugh	105	n	n	n	n
Brundall Gardens and Brundall Riverside	3910	y	y bus and train	y	y
Cantley	680	n	y train	y	n
Coltishall and Horstead	1340	n	y bus	y	y
Reedham	1020	n	y bus	y	y
Thorpe St Andrew	14235	y	y bus	y	y
Woodbastwick and Ranworth	355	n	n	y	y
Burgh Castle	1155	n	y	y	y
Filby	785	n	y bus	y	y
Great Yarmouth - Cobholm Marshes	<i>unknown</i>	n	y bus	y	n
Great Yarmouth - New Town	<i>unknown</i>	n	y bus	y	y
Ormesby St Michael	300	n	y bus	y	n
Rollsby	1025	n	y bus	y	y
Stokesby	295	n	y bus	y	y
St Olaves	<i>unknown</i>	n	y bus	y	n
Thurne	110	n	n	n	n
West Somerton	<i>unknown</i>	n	n	n	n
Barton Turf	485	n	y bus	n	n
Dilham	300	n	n	n	n
Hickling Staithe and surrounding area	975	n	y bus	y	y
Horning	1080	n	y bus	y	y
Ludham	1280	n	y bus	y	y
Neatishead	525	n	y bus	y	y
Potter Heigham Bridge	1000	n	y bus	y	y
Stalham Staithe and surrounding area	3015	y	y bus	y	y
Wayford Bridge and Smallburgh	520	n	y bus	y	y
Wroxham and Hoveton	3350	y	y bus and train	y	y
City of Norwich	121600	n	y all	y	y
Broome	465	n	y bus	No data	No data
Burgh St Peter	270	n	y bus	y	y
Earsham	910	n	y bus	No data	n
Ellingham	550	n	y bus	No data	n
Geldeston	405	n	y bus	y	n
Haddiscoe	495	n	y bus	y	n
Langley Street with Langley Abbey	515	n	n	n	n
Loddon and Chedgrave	3705	y	y bus	y	y
Trowse, Whittlingham and Kirby Bedon	905	n	y bus	y	y
Beccles	9850	y	y bus	y	y
Bungay and Ditchingham Dam	5050	y	y bus	y	y
Oulton Broad	4050	y	y bus and train	y	y

Sources: Norfolk County Council population estimates 2004 based on 2001 census rounded to nearest 5, SCC population estimates 2005 based on 2001 census, Norfolk and Suffolk Traveline, Norfolk Rural Community Council Parish Facilities Survey and the Broads Authority mini guide of things to do in the Broads.

2.16 It can be seen that there is some form of public transport available from most key Broads settlements surveyed, however this was very much a desk based exercise so without further research it is difficult to say how accessible these services are to the Broads area or

how frequently the service runs. Tourist facilities in this context include accommodation and recreational pursuits such as boardwalks and canoeing, as shown the Broads mini guide.

- 2.17 Access in a national park context also means access to the park and the countryside therein. The key issue is that much of the Broads is relatively inaccessible, as links between land and water-based recreational provisions are often limited. Public access to the fen habitat is also limited, due to the fragile and often hazardous nature of the peat substrate and the need to protect landscape and wildlife interests. The best, and sometimes only, way to reach many parts of the Broads system is on the water.
- 2.18 Research for the State of the Park gives the following information on how accessible the Broads area is.

Table 4 Accessibility Indicators

Ref	Indicator (key indicators in bold)	Current status 2007/08	Target/ threshold
AC1	% total length of footpaths and other rights of way which are easy to use by members of the public	87%	85% by 2008/09
AC2	% public rights of way which are signposted where they leave a road.	93%	90% by 2008/09
AC3	% land within the Broads open for public access	2%	2.4% by 2008/09
AC4	Length of frontage provided for public short term/ overnight mooring (owned/operated by BA)	7116m	7,200m by 2008/09
AC5	Length of path improved to allow for easier access for those with disabilities	23%	20% by 2008/09
AC6	Number of (new) angling stances to accessibility standards	<i>Data awaited</i>	
<p><i>Notes:</i> New indicators to be developed through Broads Rights of Way/Open Access Plan: e.g. improvements to network (new routes/ links to extend existing routes); improvements to strategic paths (mooring to facilities, access along water's edge).</p> <p>Indicators to be developed for access to services and facilities (e.g. % change in identified community/visitor services or facilities; % of defined villages with key facilities/services) and for accessible boating, (e.g. number of hire and trip boats or boat places accessible to mobility impaired users).</p>			

- 2.19 Current Local Plan policy seeks to support access to the Broads by safeguarding existing rights of way and pursuing opportunities for increased public access where appropriate. The emerging Development Policies DPD takes this further, incorporating policies to seek increased public access by foot, bicycle or horse, creation of new networks or completion of missing links and opening up access to the waterside. The data above provides a base line to monitor the effectiveness of this policy approach.

Rural governance and communities

- 2.20 Number of Parishes with a Parish or community plan, underway, in preparation or completed and published are shown in the below tables.

Table 5 – Parishes with a completed Parish Plan 2007/08

Parish	Complete
Hemsby	TRUE
Stokesby with Herringby	TRUE
Blundeston and Flixton	TRUE
Geldeston	TRUE
West Somerton	TRUE
Thurlton	TRUE
Ashby St Mary	TRUE
Trowse with Newton	TRUE
Upton with Fishley	TRUE
Fleggburgh	TRUE
Winterton on Sea	TRUE
Martham	TRUE
Mautby	TRUE
Surlingham	TRUE
Salhouse	TRUE
Spixworth (adjacent Parish)	TRUE
Frettenham (adjacent Parish)	TRUE
Loddon	TRUE
Chedgrave	TRUE

As a percentage Broads Parishes: 17%

Table 6 – Parishes with Plans underway

Broads Parish Plans	
Parish	Parish Plan underway
Carleton St Peter	Yes
Hickling	Yes
Carlton Colville	Yes
Bramerton	Yes
Hales with Heckingham	Yes
Acle	Yes
Halvergate	Yes
Claxton	Yes
Worlingham	Yes
South Walsham	Yes
Lingwood and Burlingham (adjacent Parish)	Yes
Great and Little Plumstead (adjacent Parish)	Yes
Thorpe St Andrew (adjacent Parish)	Yes

As a percentage of Broads parishes: 11.8%

- 2.21 The future monitoring could be linked to the deliverability of such parish plan aspirations within the Broads area. Particularly those parish plans should be monitored, where aspirations are compatible and can be delivered through Broads Authority statutory or other functions such as new conservation areas, both in terms of natural and cultural heritage.

National comparison – Rural Communities

- 2.22 According to the State of the Countryside 2007 report, published by the Commission for Rural Communities, more people in village, hamlets, isolated dwellings, towns and town fringe areas participated in civic consultations, such as local questionnaires, public meetings and local action groups. Although figures are generally low for all levels of participation (below 20%), double the amount of people attended public meeting about local services or problems in village, hamlets, isolated dwellings (10%) in comparison with urban areas (5%). This is one way of measuring social capital and shows that rural groups are more likely to participate where there is a clear local relevance. This engagement in community issues is something LDF consultation can tap into, both in terms of using Parish Plans themselves as evidence to inform policy as well as using wider parish events to inform parishioners about planning policy.

Economy: economic activity rates, household income, house price level, productivity and employment.

- 2.23 The hire boat industry is the single most important provider of holidays, accounting for 4.4 million visitor nights (in 1998). Angling also contributes significantly to the Broads economy. Tourism benefits shops, restaurants, accommodation providers and attractions in the area. A study by the East of England Tourist Board carried out in 2001 showed the overall value of tourism to the Broads in 1998 as approximately £146m, of which 82% was generated by staying visitors and 18% by day visitors. This level of expenditure supported the equivalent of 3,107 full-time jobs.
- 2.24 Boat building is a significant economic sector within the Broads and throughout the East of England region. Data from the British Marine Federation show that the total revenue in the region from the leisure marine industry in 2005/06 was £363m (12.3% of the total UK market) and that, as a major tourist destination, the wider Broads area contributes about one third of the national revenue for the inland hire and charter sector within the industry. For every £100 turnover, it is estimated that another £40 spending is generated in the area. The same statistics show that, locally, around 1,133 people are employed in the marine industry within the Broads area. Firms are mainly small (77% have fewer than 10 employees) and employees live locally.
- 2.25 The most recent report (2007/8) with the British Marine Federation (BMF) shows that some 31% of turnover is in boat manufacture, a further 10% in boat distribution and dealers and just below 30% are in inland hire activities.
- 2.26 The most recent survey also looked at activities within boatyards and marinas in the Broads area. Out of 33 businesses surveyed, 30 included manufacturing (including repair and maintenance), 29 included marina and tourism uses, 26 included retail businesses and 20 involved boat hiring (Broads survey 2008).
- 2.27 Agriculture has been a significant part of the economy of the Broads and its wider environs, but is having to diversify and change its practices to survive. A number of schemes, including Environmental Stewardship, deliver agricultural support in ways that promote conservation of wildlife, landscape character and public access. Traditional local skills such as reed and sedge cutting, thatching and mill wrighting remain a small but important part of the Broads' economy and culture.

- 2.28 The state of the park report shows data, extracted in table 7 below, of the number of persons economically active in the Broads and the corresponding employment level percentage.

Table 7 Economic Indicators

Ref	Indicator (key indicators in bold)	Current status 2007/08	Target/ threshold
EC1	Number of persons economically active	*2719	
EC2	% employment level	*61%	No decrease in employment levels

- 2.29 According to the State of the Countryside 2007 report, the Gross Disposable Household Income in Norfolk is between £11,500 - £12,499 and for Suffolk it is slightly higher at £12,500 - £13,499. This is comparable with the figures produced by ONS on Gross Value Added per capita, which measures the value output per employee this found that this was slightly higher for Norfolk and Suffolk at £13,500 - £14,500 and £14,500 and above, respectively.
- 2.30 Tourism and particularly the boat hire industry are key local employers, and the good news for tourism on the Broads is that there are some indications that the hire boat industry has turned a corner and beginning to be more economically viable. The number of weekly hired motor cruisers was up in the 2007 season from 822 to 829, an increase for the first time since 1996. By contrast the number of private motor cruisers has steadily increased from 3,500 in 1995 to 4,685 in 2007.

Environment: key assets in the natural environment

- 2.31 The Broads habitats support a wealth of species that require active management to maintain. The components of biodiversity within the Broads are being affected by a number of threats and pressures. These include land-take for development, invasion of non-native species (including coypu, mink, Asiatic clam and floating pennywort), pollution, habitat fragmentation and disturbance, and climate change.
- 2.32 The increasing threat of climate change, combined with the loss of natural habitat and food sources from the development of green field sites, may have severe impacts on local biodiversity, particularly on vulnerable species. A Biodiversity Action Plan (currently in preparation) will help to mitigate some of these effects, but will most likely be unable to prevent the overall trends of loss of local biodiversity through habitat loss and fragmentation, food loss and severance brought about by development.
- 2.33 In particular, the Broads area is threatened by two sets of water resource problems: low river flows and depleted groundwater, and the threat of increased saltwater incursion and tidal saltwater flooding. The former is linked directly to the maintenance and management of the navigable waterways and how this is handled. Water quality is also an issue: the main threat comes from diffuse pollution, often arising from outside the Broads boundary (e.g. from farm and road run-off).
- 2.34 Table 8 below shows key indicators from the State of the Park report on key environmental assets.

Table 8 Environmental Indicators

Ref	Indicator (key indicators in bold)	Current status 2007/08	Target/ threshold
BF1	% of Broads fens surveyed	9%	100% by 2010
BF2	Number of booming bitterns	7 to 8	12-14 by 2010
BF3	Number of water bodies with Holly Leaved Naiad	7	10 by 2010
BF4	Number (and extent in hectares) of designated sites for nature conservation (clipped to BA boundary)		No reduction in total area or destruction of area
	(i) Ramsar	2 (6647.76 ha)	
	(ii) Special Area of Conservation (SAC)	2 (5928.73 ha)	
	(iii) Special Protection Areas (SPA)	3 (6651.05 ha)	
	(iv) Site of Special Scientific Interest (SSSI)	29 (7175.99 ha)	
	(v) National Nature Reserves (NNR)*	9 (2296.57 ha)*	
	(vi) Local Nature Reserves (LNR)	3 (467.24 ha)	
BF5	% of SSSIs in favourable or recovering condition	47%	95%
BF6	% of SSSIs units located predominantly on peat, in favourable or recovering condition	37%	95%

Countryside character and tranquillity

- 2.35 In the most recent assessment of countryside character cited in the 2007 State of the Countryside report the Broads area is clearly shown as an area of 'enhancing' character, part of only 10% of character areas being enhanced nationally.
- 2.36 Tranquillity is another aspect important to the quality of rural areas. It is subjective but based on areas where people can enjoy nature free of disturbance of man-made features or activities. Recent work by the CPRE has attempted to provide an indicator of tranquillity across England, using measurements of noise, light pollution and taking into account topography. It also took into account factors people considered made a place tranquil such as bird song and running water. Even at this national scale of mapping key parts of the Broads are visible, such as the expanse of Halvergate marshes.
- 2.37 The Broads partners and stakeholders identified seclusion and wildness as key attributes to preserve in the 2004 Broads Plan. The work by the CPRE on tranquillity has been mapped and the Broads Authority has referred to this in drawing up the Development Policies DPD. Future updates to this data could be monitored in the AMR.

Built Environment and Housing

Issues: quality and assets of the built environment; and development on previously developed land

2007/08	Percentage of development on previously developed land: 68.75% (Excluding barn conversions).
---------	---

- 2.38 Nationally rural areas have lagged behind urban areas in the take up of development on previously developed land, which perhaps simply can be accounted for by the fact that rural areas have less brown field land available in sustainable locations. The State of the Countryside 2007 shows data that indicates that between 50% and 65% of development occurs on previously developed land in rural areas compared to 67% to 88% in urban areas. These are figures have risen significantly between 1998 and 2005.

- 2.39 The current local plan has restrictive policies preventing residential development outside development boundaries and only allowing them inside boundaries if the development is part of a small group. Replacement dwellings are only permitted where they are of the same form and character. This combined with the aim to protect the landscape of the Broads, and the fact that a lot of applications are replacing and redeveloping Broads holiday chalets can account for the reasonably high proportion of proposals on previously developed land.
- 2.40 There is limited data available on the density of new dwellings per hectare. Residential development in the Broads generally consists of replacements of previous dwellings, but when sites with one or more dwellings do come forward the landscape impact is significant in the form and siting of any new units. The protection of a nationally valued landscape such as the Broads, often takes precedent over the Government's drive to increase the density of new development. In the last year 12 new dwellings have been approved and the overall density of these is below 30 units per hectare (see Appendix 1). However, nearly all of these have been single replacement dwellings on large plots and therefore the figure is not representative of any wider trend. This is another illustration of how nationally developed indicators do not always fit with the Broads Authority's statutory duties.
- 2.41 Since the publication of Planning Policy Guidance Note 3 in 2000 which set an objective to increase densities of housing development above 30 dwellings per hectare minimum, densities have risen dramatically in major urban areas to around 64 dwellings per hectare. This is a key Government indicator and central to their aims of ensuring the efficient use of land. Rural areas, nationally, have seen only moderate increases in density of housing development with development at between 24 and 32 units per hectare being the norm still. The Broads area follows this latter trend.

(iii) Significant Effects Indicators

- 2.42 Significant effects indicators will be linked to the sustainability appraisal objectives and indicators. Monitoring significant effects will enable a comparison to be made between the predicted effects and the actual effects measured during implementation of the policies.
- 2.43 Table 8.2 in the Environmental Report (that accompanies the adopted Core Strategy) gives an example of the likely structure by which environmental effects and the SA will be reported within the Annual Monitoring Report (AMR) and includes an appropriate threshold for evaluation of significance. If the assessment column is negative and the reason for change is/was within the remit of the Core Strategy, remedial action will be outlined.
- 2.44 Further data and analysis is also provided in chapter 4 on SA/SEA.

(iv) Process Targets

- 2.45 The Local Development Scheme (LDS) or project plan for the LDF sets out a timetable for the production of documents setting various milestones along the way. The AMR is the annual opportunity to review the milestones in the published LDS and consider whether they need amending. As the LDS timetable is a 3-year programme, it is reviewed and rolled forward in the AMR (see Chapter 3).

Developing the Monitoring Framework

- 2.46 The development of monitoring principles and preparation of an outline of the monitoring framework are two key tasks that authorities need to undertake in developing the monitoring framework. Factors to consider include:

- Identifying available information to inform the evidence base;
- Identification of any data 'gaps' and how these might be addressed; and
- How the authority proposes to develop its monitoring framework, and the content of the annual monitoring report, over time.

2.47 In the past, Planning Committee has received a commentary on the previous year's performance at the first meeting of the new cycle usually in July. These reports have not included monitoring of formal performance indicators. Indeed, the Authority currently collects a limited set of data. Data that is collected by the county councils for district areas is returned by the districts and does not pass through the Authority, nor is specific to the Broads area. The Monitoring Framework is now available in the adopted Core Strategy and this forms the basis for monitoring performance in this report.

Local Plan Policies

2.48 The Broads Local Plan is still a valid part of the development plan, although certain policies are no longer 'saved' policies, following a review under the Planning and Compulsory Purchase Act of 2004. Its policies will cease to have effect once the Development Policies DPD is adopted. At this interim stage this report includes information on the performance of both the Core Strategy policies and the Local Plan policies. The Broads Authority is now able to use CAPs, the planning application IT software tool, which has been fully installed as the Authority's planning IT system. This has been done with development monitoring requirements of the AMR in mind so that future reports can be supported more easily with relevant data about the decisions made and the development implemented in the year.

Conclusion

2.49 As last year the Broads Authority is concerned to ensure the monitoring requirements are in scale with the role of the Authority as a local planning authority for an area with the nationally recognised landscape character of the Broads.

2.50 Work and greater co-operation is beginning to happen within the National Park Development Plan Officers Group meeting twice yearly. This will be a key opportunity to compare National Park monitoring requirements and ensure that the quality of this AMR is enhanced in future years.

National and Local Best Value Performance Indicators 2007/08

2.51 The National and Local Best Value Performance Indicators reported on annually provide a regularly updated data set that reflects both direct effects of planning policies and indirect impacts.

2.52 Other contextual indicators, such as demographic and economic statistics are updated less frequently so much of the AMR in this respect remains unchanged. Previous AMRs for 2005/06 and 2006/07 can still be seen on the Authority's website.

2.53 The AMR reflects those indicators reported in the Annual report and business plan where they are relevant to the delivery of the Local Development Framework. This year in order to provide some analysis of year on year change an extra column has been added as a commentary on changes since last years report; this was specifically requested by members at the Broads Authority meeting that discussed the submission of the 05/06 AMR. The table below sets out the contextual indicators relevant to the AMR.

Table 9 National and Local Best Value Performance Indicators 2007/08

BA B1(a) Number and percentage of broads in good	197 (23%)	Down by 2%
--	-----------	------------

(Phase 1) or fair (Phase 2) ecological condition.		since 2006/07
BA B1(b) Number and percentage of broads undergoing restoration.	185 (22%)	Down by 1% since 2006/07
BA B2 Total area (ha) of fen in favourable ecological condition/under appropriate management.	1,500 ha	Down by 1,375ha since 2006/07
BA B3 Total area (ha) within Broads ESA under Fen Tier.	1,083 ha	Down by 50ha since 2006/07
BA B4 Total area (ha) within Broads ESA under Tiers 1, 2 & 3.	10,301	Down by 580 since 2006/07
BA B5 Total area of the Broads managed in line with BA conservation objectives.	12,613ha	Down 1020 ha since 2006/7
BA B6 Percentage of broads managed in line with BA conservation objectives.	41%	Down by 11%
BA B7 Net annual change in area (ha) managed in line with Broads Authority conservation objectives.	-1,020	Decrease from 461ha in 05/06
BV 219(a) Total number of conservation areas in the Broads area.	21	Increased 7.5%
NPA CH3(b) Listed Buildings at Risk rescued through Authority action during the year as a percentage of the total number of Listed Buildings at Risk.	11.5%	No change
BA B9 Listed Buildings within the Broads indicated as 'At Risk' as a percentage of the total number of listed buildings (contextual indicator).	10%	Increased by 5%
NPA RM1 Percentage of total lengths of footpath and other rights of way which are easy to use by members of the public.	87%	Increase by 1%
NPA RM2 Percentage of public rights of way which are signposted where they leave a road.	93%	Increased by 1.7%
BA C1 Percentage of path improved to allow for easier access for those with disabilities.	23%	Increase by 0.2%
BA C3 Percentage of land within the Broads open for public access.	2%	38 last year
BA D2 Number of weeks dredging effort	66	450m increase
BA D4 Length of frontage provided for public short term/overnight mooring owned or operated by the Authority.	7116m	16% increase
BV 106 (BA) Percentage of new homes <i>approved</i> on previously developed land.	68.75%	Decrease from 100% in 2006/7
BV109(a) Percentage of major planning applications	83.33%	decreased by

determined within 13 weeks.		2.38%
BV 109(b) Percentage of minor planning applications determined within 8 weeks.	87.27%	21.98% increase
BV 109(c) Percentage of other applications determined within 8 weeks.	81.82%	4.07% decrease
BV 204 The percentage of appeals allowed against the Authority's decision to refuse planning applications.	22.2%	Decrease by 27.8%
BV 205 Score against Quality of Service Checklist	100%	Increase by 5.56%
NPA DC1 Number of planning applications received (contextual indicator).	273	33 decrease from 2006/07
BA C6 No of passengers of Broads sustainable boat trips	9,994	260 decrease
BA B5 Total area of the Broads managed inline with the Authorities conservation objectives	12,613ha	1,020ha decrease
BV 219 a) Number of conservation areas	21	1 increase
BV 219b) Percentage of conservation areas with an up to date character appraisal	38.09%	1.25% increase
BV 219c) Percentage of conservation areas with published management proposals	4.7%	4.7% increase

Notes to Table 9

BA B2 through to BA B7 are all based to some extent on agri-environment scheme take-up. Since this scheme is administered by Natural England the figures are not within the Authority's direct control. Owing to the phased change between ESA and the new Environmental Stewardship scheme, and uncertainties over budgets, it is difficult to provide accurate and realistic projections for the next few years.

BA B5 has decreased significantly owing to a reassessment of SSSI condition by Natural England following results of the Review of Consents programme, which revealed a higher proportion of SSSIs in unfavourable condition than previously assessed.

BV 106 (BA) includes conversions from agricultural use, for instance barn conversions. This is not part of the definition set out in the annex to Planning Policy Statement 3: Housing, which does not class agricultural use as brown field, or previously developed land. When agricultural land/buildings are discounted this leaves a figure of 70% of development approved on previously developed land.

BV 219a) has increased due to declaration of Conservation area of Halvergate and Tunstall approved by members at Planning Committee August 2007.

Further analysis and summaries of performance can be found in the Broads Authority Business Plan 2007/08 - 2009/10 (incorporating the Best Value Performance Plan).

Table 10 Monitoring Condition and Performance

	State of the Park	Broads Plan	Local Development Framework	SEA/ Sustainability Appraisal	Best Value	Corporate Performance Assessment
What is monitored?	Trends in distribution and condition of the park's resources and their use, especially natural and cultural resources.	Effectiveness in managing the Broads in terms of delivering the aims and objectives of the Plan.	Implementation of local development scheme and extent to which policies in local development documents are being achieved.	Environmental and sustainability effects of local development documents.	Performance in relation to delivery of the Authority's statutory duties and wider government policies, based on a combination of economy, efficiency and effectiveness.	Corporate performance, based on key lines of enquiry (vision, processes for its delivery and achievements) ²⁰
Whose performance measured?	Broads Authority and partners	Broads Authority and partners	Broads Authority and partners	Broads Authority	Broads Authority	Broads Authority
What is the driver?	Required to inform review of Broads Plan	Need to evaluate outcomes in order to monitor effectiveness of delivery of the Plan and make changes as appropriate	Planning and Compulsory Purchase Act, 2004 ²¹ and need to inform development decisions.	European Strategic Environmental Assessment Directive 2001 on 'the assessment of the effects of certain plans and programmes on the environment'.	Local Government Act, 1999	Audit Commission
What is required for monitoring?	Indicators that detect changes over the long-term (5+ years)	Indicators derived from the Plan	ODPM identifies 22 'Core Output Indicators' ²² ; plus local output and significant effects indicators.	Objectives and indicators, developed in consultation with stakeholders ²³ .	Best Value Performance Indicators: National; national park agreed ²⁴ ; local (set by Broads A)	Evidence upon which to assess performance

²⁰ Replaces Best Value reviews of individual services

²¹ Further details of this requirement are provided in *Town and Country Planning (Local Development) (England) Regulations 2004*

²² *Local Development Framework Monitoring : A Good Practice Guide*, Office of Deputy Prime Minister, 2005

²³ Not specifically required by European Directive, but advocated in government guidance, as above.

²⁴ Indicators agreed among National Park Authorities

Chapter 3

LOCAL DEVELOPMENT SCHEME

Statement of Community Involvement (SCI)

- 3.1 The revised Statement of Community Involvement was formally adopted in March 2008. This was amended in order to take account of changes to the delivery of the Authority's planning service, which was taken 'in house' in April 2007, Chapter 10 of the SCI on 'Community Involvement in Planning Applications' was revised. Minor revisions were also made to Table 3 (process in regard to preparation of the SCI) and Appendix 1: List of consultees.

The Core Strategy

- 3.2 The Core Strategy DPD was submitted to the Secretary of State on 28 September 2006 in accordance with the adopted LDS. The Authority received 180 representations, 109 of which considered the Core Strategy unsound, against the nine soundness tests set out in National policy.
- 3.3 In April 2007 the appointed Inspector held public examination sessions into the soundness of the Core Strategy. The examination also included two half days of accompanied site visits, one by boat from Horning to Wroxham. The Authority received the Inspector's report in early July, which found the Core Strategy Sound, with minor recommendations for small changes. The Broads Authority formal adopted the Core Strategy on 28 September 2007 with minor changes.
- 3.4 The Authority is the first in the family of National Parks to adopt a Core Strategy and the first Authority in Norfolk also to do so. The Core Strategy is now being used in the determination of planning applications and that is reported in Chapter 5.

The Development Policies DPD

- 3.5 The Development Policies DPD, although delayed following more in depth work required on the Core Strategy and recent staffing problems, is still progressing. Following the initial stages of research and evidence gathering, an issues consultation was undertaken in early Autumn 2006. Responses were fed into the production of the Issues and Options draft produced in summer 2007 for consultation in June, July and August. The Preferred Options draft DPD was published in December 2007, and responses have been analysed, with a draft version for submission largely ready by Summer 2008. Some delay to the LDS timetable for this document resulted from further negotiations with Environment Agency over the policy for flood risk and development and a consultation on a specific policy for residential moorings, to amend the emphasis of the Preferred Options draft on this point.
- 3.6 The Development Policies DPD is now delayed, however, because of staff resource issues. The departure in October of the Planning Policy Officer and in November of the Director of Planning and Strategy means that replacement staff need to be in post before the submission of the document can be entered into.
- 3.7 The timetable below (Figure 2) represents the revised schedule of dates for submission in May 2009. This assumes that a replacement Planning Policy Officer can be appointed by the beginning of 2009. A further stage of consultation will be necessary, however, as the Regulations have changed to provide for consultation prior to submission by the Authority (instead of as part of the process). Altogether a delay of ten months has occurred for the reasons outlined above.

The Supplementary Planning Document on Development and Flood Risk

- 3.8 The Development and Flood Risk SPD (SPD 1) will supplement Core Strategy policy CS20 and the Development Policies DPD in due course. This is obviously a major issue for the area of the Broads Authority with virtually every community affected.
- 3.9 The early evidence gathering for this document was combined with the consultation on the Development Policies Issues and Options, and a full consultation on a standalone document will happen in December 2007 alongside the Development Policies DPD – Preferred Options. The SPD was adopted in September 2008 and is now being used in planning application decisions.

Local Plan Policies

- 3.10 Since the 2004 Planning and Compulsory Purchase Act all current Local Plan policies were given a temporary life and saved three years, after which they would expire if they were not replaced by policies in the LDF. This 'temporary life' ended in September 2007. To extend the life of policies, and 'save' them for use in future decision making until replaced, the Authority had to apply to the Secretary of State. This was the subject of a report to Broads Authority in March 2007.
- 3.11 Most policies of the Broads Local Plan will remain "saved" under transitional arrangements until superseded by policies in the Development Policies DPD with the agreement of the Secretary of State (due November 2009 under the schedule at Figure 2 below). The Authority did not include policies in the 'saving-application' to the Secretary of State, which were no longer required or had been superseded by more recent national policy guidance. A schedule setting out the position in relation to the policies of the Local Plan 1997 and the Core Strategy is available on the Authority's website, www.broads-authority.gov.uk and this will be maintained until all the policies are superseded.

FIGURE 2 : Local Development Scheme – timetables (revised from current LDS version).

**Timetable for preparation of Local Development Framework documents
Sept 2008 – Sept 2011**

Documents	2008				2009								2010				2011						
	S	O	N	D	J	F	M	A	M	J	J	A	S	O	N	D					J	J	A
Statement of Community Involmt (Review)								*															
DPD1 Core Strategy																							
Commence review of Core Strategy																					1		
DPD2 Developmt Policies						2			3							4							
Commence review of Developmt Polics																							
Proposals Map Updates						2			3							4							
SPD1 Develop-ment & Flood Risk	6																						

* Note: The Proposals Map will be updated, submitted and adopted parallel to adoption of all DPDs

	Key Milestones for DPD's		Key Milestones for SPD's
1.	consulting statutory bodies on the scope of the Sustainability Appraisal	5	Publication of draft SPD – Reg 17
2.	Publication of the DPD Reg 27	6	Adoption of SPD – Reg 19
3.	Submission of the DPD Reg 30		Note for SCI
4.	Adoption of the DPD – Reg 36	*	Pending Royal Assent of Planning Act

Chapter 4

SEA/SUSTAINABILITY APPRAISAL

- 4.1 The work that was done to support the adoption of the Core Strategy in terms of sustainability appraisal, that appraises the potential social, economic and environmental impacts of policies, provides a key evidence base for the LDF and should be reported on in the AMR. The Environmental Report, that was published to support the adoption of the Core Strategy, gives a structure by which environmental effects and the SA will be reported within the Annual Monitoring Report (AMR). This includes an appropriate threshold for evaluation of significance. If the assessment column is negative and the reason for change is/was within the remit of the Core Strategy, remedial action can be identified.
- 4.2 The Authority must compile a set of sustainability objectives and indicators against which it will evaluate its plans and proposals. This is a requirement under an EU Directive and there is a prescribed method of compiling these objectives and of carrying out assessments. Consultants Small Fish worked closely with the Authority to produce the Sustainability Appraisal Report on the Core Strategy. The table below sets out the 12 SA indicators summary of the Indicators presented in that report (in Appendix 3). The Sustainability Objectives are outlined in the table below.

Table 11 Sustainability Appraisal Objectives

REF	SEA Topic	Objective
<i>Environmental</i>		
SA1	Landscape, Biodiversity, Flora, Fauna, Soil, Cultural Heritage	To protect and enhance the natural and cultural environment of the Broads, whilst improving its ability to adapt to environmental change
SA2	Air, Climate, Water, Landscape, Biodiversity	To achieve sustainable resource use through the efficient use of land, water, energy and materials
SA3	Water	To improve water quality
SA4	Climate	To reduce vulnerability to climate change and flooding
<i>Social</i>		
SA5	Population, Human Health	To provide safe access for all to facilities, services and sites of natural and cultural interest
SA6	Population	To facilitate opportunities for affordable housing adjacent to, and in exceptional circumstances within, the Broads for those who live and work in the Broads
SA7	Human Health	To encourage safe and healthy recreational activities for all Broads users and residents
SA8	Population	To engage communities within and adjacent to the Broads in the work of the Broads Authority

Economic		
SA9	Material Assets	To maintain and enhance the infrastructure of the Broads in support of business activity
SA10	Material Assets	To support a flourishing and healthy Broads economy
SA11	Air, Climate	To encourage the use of public transport, cycling and walking
SA12	Material Assets	To sustain skills to maintain local crafts and improve the quality of local products

4.3 The same consultants have also prepared the Sustainability Appraisal report on the Development Policies DPD, which is now awaiting pre-submission consultation (see Chapter 3 for the programme). The same Monitoring Framework and indicators will be used to assess this document and hence the AMR will also need to consider the impact of policies in the Development Policies DPD (once adopted).

4.4 Specifically DCLG recommends that monitoring of the environmental effects of these documents should identify:

- The accuracy of the assessment's predictions of sustainability effects;
- Whether the plan is contributing to the achievement of desired SA objectives;
- Whether mitigation measures are performing as well as expected;
- Any adverse environmental effects, their magnitude and appropriate remedial action.

4.5 The SA report states that the Authority will pay attention to effects that :

- Indicate a likely breach of international, national or local legislation, recognised guidelines or standards;
- May give rise to irreversible damage, with a view to identifying trends before such damage is caused;
- Where there was uncertainty in the SA and where monitoring would enable preventative or mitigation measures to be taken;
- Would establish a causal link between the implementation of the DPD and the environment in question;
- Illustrate changes in the direction of indicators from the baseline.

and will take remedial action or identify who can take action to ensure that damage to such objectives does not occur.

4.6 From the information gathered for this report, there is no evidence of any significant effects that breach international, national or local legislation or guidance and no evidence of irreversible damage arising from application decisions in the year 2007/8. It is likely that more information will be needed in future reports to establish the way in which development has been implemented and whether the management of development and the effects of its implementation on the ground are any different from that anticipated. No monitoring of completions or development implementation has been carried out this year, so no such information is available in this report.

4.7 Work done for the Sustainability Appraisal Report has established an environmental baseline summary to provide a basis for forecasting and monitoring the effects the Local Development Framework as a whole may have on the environment. This baseline is also useful for the AMR and can be revisited annually and impacts monitored and reported in

this way. Table 12 overleaf provides the 2007/8 figures to update the baseline figures, which were contained in the 2006 Core Strategy Sustainability Appraisal.

Table 12 Figures for Monitoring Sustainability Appraisal Indicators (2008) compared with Baseline

Indicator	Baseline (2006)	Current (2008)	Reason for Change	Threshold	Assessment
Number and area (ha) designated sites for nature conservation: <ul style="list-style-type: none"> • Ramsar • Special Areas of Conservation • Special Protection Areas • Special Sites of Scientific Interest • National Nature Reserves • Local Nature Reserves 	<ul style="list-style-type: none"> • 2 (6691.55) • 2 (6291.54) • 3 (6815.24) • 29 (7461) • 8 (2257.09) • 1 (375) 	2 (6648 ha) 2 (5929 ha) 3 (6651 ha) 29 (7176 ha) 9 (2297 ha) 3 (467 ha)	Areas have been remeasured. New declarations of National and Local Nature Reserves (Source State of the Broads Report)	No reduction in total area or destruction of area (Statutory)	No reduction in designated area. See below data on condition.
% of SSSIs in favourable or recovering condition	81%	47%	Decreased significantly owing to a reassessment of SSSI condition by Natural England following results of the Review of Consents programme.	If condition favourable or recovering falls below 95% by 2010 (English Nature PSA target 2010)	See reason for change outside remit of the Authority.
Total area (ha) of fen in favourable ecological condition/under appropriate management	2,875ha	2,875ha – No change	N/A	No decline below 2,875ha (BA B2)	No change
Total area and % of the Broads managed in line with the Authority's conservation objectives	16,725 ha (56%)	45%	See notes under table 9	No decline below 56% (BA B5,B6)	Outside the Authority's control and not in the remit of the LDF
Countryside Quality Counts: % land having marked changes inconsistent with character	0%	Some change probably consistent with character	Changes are mixed despite National Park Status and development pressure consistent changes in agriculture.	No decline below baseline	CQC Assessment 1990-98 Some change probably consistent with character

Chapter 5

IMPLEMENTATION OF THE LOCAL DEVELOPMENT FRAMEWORK AND LOCAL PLAN

- 5.1 This chapter sets out the performance of policies in the Local Plan and the Local Development Framework in terms of planning decisions made in 2007/8. It looks primarily at the 'major' application decisions, as those are the ones most likely to have wider impacts.

Monitoring System

- 5.2 From 1st April 2007 the Broads Authority has taken over responsibility for handling planning applications in house. The Authority employed a team to undertake this task, in order that it could ensure that reports and decisions are more closely related to the Authority's own priorities and policies.
- 5.3 In addition from that date a new monitoring system has been set up across the whole of Norfolk, coordinated by Norfolk County Council, but with individual authorities entering the data relating to their applications on line. The Broads Authority has participated in this system, but unfortunately staff have not had time to enter the range of data that is necessary for effective monitoring of policy implementation to date. This report has therefore been compiled using file records in house, rather than being able to request data from the monitoring system, as originally intended.
- 5.4 As a result of this failure to implement the new system fully, this year's report cannot contain the kind of information that would enable decisions to be related to the LDF policies that are intended to lie behind and support them.

Performance of Statement of Community Involvement – LDF Consultation

- 5.5 The revised Statement of Community Involvement (SCI) was adopted in March 2008 and its performance is also to be monitored through this annual report.
- 5.6 During the year 2007/08 community engagement and consultation was focused on the Development Policies DPD and the Development and Flood Risk SPD. Consultation methods included written mailings (principally for the formal 6-week consultation stages), workshops, public meetings, questionnaires/ leaflets, officer attendance at community meetings and meetings with key partners and local interest groups.
- 5.7 Consultations were publicised through the Authority's staff and member bulletins, publications (e.g. Broadcaster and Broadsheet) and the website, an annual LDF update leaflet, publicity leaflets and posters, the Norfolk-wide Consultation Finder website and the local press. Regular reports were taken to the Authority's main committees and to other forums and working groups (e.g. Broads Forum, Broads Local Access Group). Consultation documents were made available on the authority's website, at its head office and information centres, at local council offices and libraries, and on the Consultation Finder website.
- 5.8 45 written representations were submitted to the Issues and Options stage and 131 to the Preferred Options stage consultations for the Development Policies DPD (the latter combined with the Development and Flood Risk SPD consultation). The responses received were generally detailed and well informed. The response was split 35/65 at Issues and Options stage between specific (statutory) consultees and general consultation bodies/ individuals and 25/75 at Preferred Options stage. This indicates a good cross section of respondents, especially at Preferred Options stage.

- 5.9 Following analysis of Issues and Options representations, workshops were held for particular groups (e.g. planning agents, parish councillors). Officers trained in stakeholder facilitation skills helped to design and run the workshops. Attendance at the workshops varied, the planning agents' workshop being the most popular. This consultation method was particularly good for directly engaging with stakeholders, debating specific issues and refining policy direction and wording, with lively participation from those attending.
- 5.10 Iterative meetings were held with key partner organisations to resolve specific policy issues and wording, in particular relating to flood risk and development issues. The preferred policy for residential moorings was the subject of a special meeting with local residential boaters (leading to wider, written consultation in July 2008). This face-to-face style of involvement was beneficial in terms of direct engagement with a specific interest group. However, it is recognised that consultation on potentially contentious or emotive issues, particularly where there may be strongly opposing views, needs careful management and may be best suited to a workshop style format, possibly led by an independent facilitator, rather than to a traditional public meeting.
- 5.11 Planning policy officers attended scheduled community group meetings and forums (e.g. Middle Thurne Working Group, Barton Broad Liaison Group) to discuss specific issues and answer questions on the emerging policies. This engagement method was welcomed by the groups involved, but was resource intensive, given the small staff complement. Officers also met with representatives from local interest groups (e.g. Broads Society) on request.
- 5.12 Engaging authority members through workshop-style debates held at, or in addition to, formal committee meetings proved more productive than simply discussing issues as part of a formal agenda, possibly because of the greater time allowed and the change in format. Members were also encouraged to attend other stakeholder workshops and events.
- 5.13 The range of consultation activities is broadly within that discussed in the SCI. Certain methods of engagement are proving more effective in the circumstances pertaining to these two documents, but they raise specific and detailed issues, which need to be addressed in such a style, where other documents may require a different emphasis. There is no need to review the SCI at this stage.

The Assessment of 'saved' Local Plan Policies

- 5.14 During the period 2007/8, the Broads Local Plan remained operative, except that certain policies were deleted, no longer being recognised as 'saved' policies under the Planning and Compulsory Purchase Act 2004. The Local Plan policies will cease to be operative once their replacement policies in the Development Policies DPD (or other development plan documents) are adopted.
- 5.15 Assessing the implementation of Local Plan and Core Strategy policies is a way of measuring the performance of current policy, providing *output indicators* as mentioned above (Chapter 2). Certain key indicators are published on a national basis and these are called Core Output Indicators. These can be found at Appendix 1 and will be submitted to the government. In addition certain indicators are requested by the East of England Regional Assembly for the monitoring of the Regional Spatial Strategy. These regional indicators have not been separately identified here, but will be completed by officers on request.
- 5.16 Throughout 2007/8 there continued to be pressure for residential development in a variety of locations and at an increased scale generally. The lack of regard to flood risk is a serious issue which applicants must consider prior to submitting applications and will generally require a flood risk assessment specific to the proposed development to be submitted.

Assessment of Planning Applications

- 5.17 In 2007/08 (April – March) the Authority determined 281 planning applications compared with 291 in 2006/7 and 270 in 05/06. Table 13 below shows the breakdown of applications by major/minor/other and those approved/refused and withdrawn. It is clear from the percentages column in the table below and the pie chart in figure 2, that the majority of applications were approved. These figures are taken from the quarterly returns to DCLG.

Table 13
2007/08

	Apr-Jun	Jul-Sept	Oct-Dec	Jan-Mar	Totals	Percentages
Majors	0	3	2	1	6	2%
Minors	27	23	23	29	102	43%
Others	49	37	23	23	132	55%
Withdrawn	14	6	14	7	41	15%
Approved	66	57	43	51	217	77%
Refused	10	6	5	2	23	8%

Figure 3

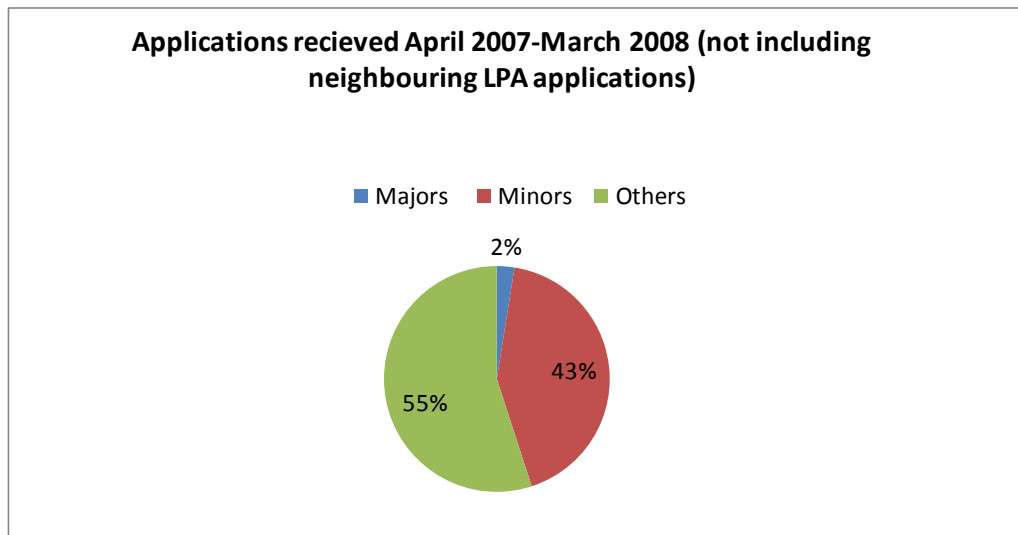
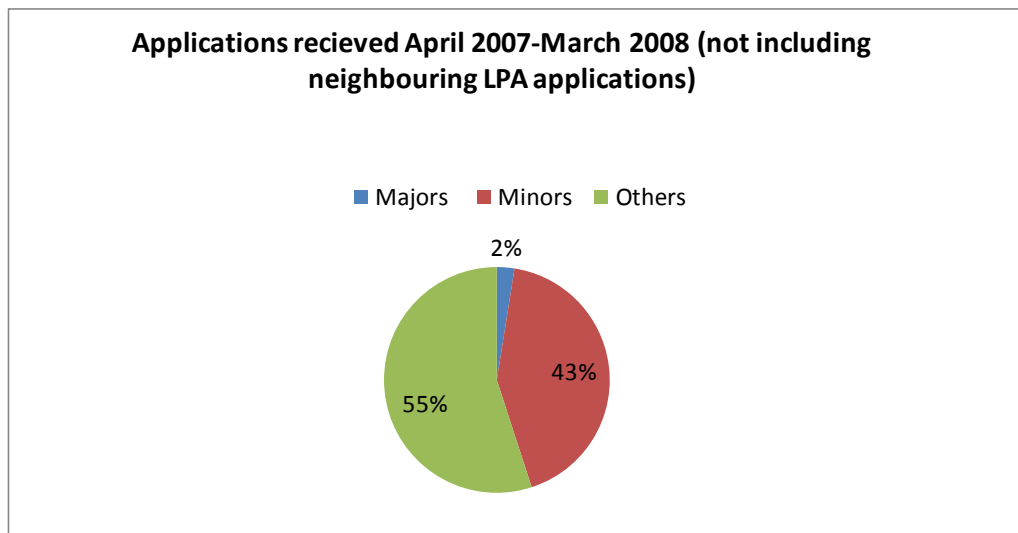


Figure 4



Issues raised in Applications

- 5.18 Previous planning applications have been determined under a variety of policies from the Broads Local Plan 1997 (BLP), the Broads Core Strategy (BCS) (2008), Norfolk Structure Plan (NSP) and where appropriate the Suffolk Structure Plan (SSP), all of which made up the extant development plan for the Broads Executive area at the time of writing, for the AMR monitoring period. In 2007/8 this is now reduced, to the East of England Plan (RSS) adopted in May 2008, the Core Strategy (September 2007), and the 'saved' policies of the Broads Local Plan and two Structure Plans.
- 5.19 The policies most frequently used include the following from the BCS:
 - CS1 (Broads strategy and landscape quality)
 - CS24 (residential development and the local community)

and the following from the BLP:
B11 (Design)
H11 (Extensions and Annexes)
INF1 (Development and Flood Risk – in association with PPG25).

Also the BLP policy TC8 (Parking, Servicing and Other Highway Requirements) and ENV14 of the NSP (Strategy for the Broads) were also used, but with less influence on the decision.

Design

- 5.20 Most applications now warrant a design and access statement; many requiring considerable input before they can be recommended for approval. Key policies are shown to be:

Appreciation by applicants of sensitivity of the Broads and especially sites visible from the water. (BLP Policy B11)
Suitability of redundant rural buildings for conversion to dwellings (eg structural surveys, PPS7, BLP Policy H7).

Navigation

- 5.21 The series of flood defence works applications continues to raise issues across all the Authority's duties. Many applications are considered as major applications, given the engineering scale of them. A large number of applications include quay headings and/or moorings and/or angling platforms. A few applications are made for slipways. Key policies are shown to be:

How to bring forward proposals for new slipways and the effect on navigation (Policy TR1, TR2).
Protection of short stay moorings in boatyards for visitors and for holiday accommodation (Policy EMP5).
Use of guidance on bank protection (Policy C8).
Protection of visitor moorings (BCS 14)

- 5.22 The Moorings Strategy provides an audit of existing facilities and a Strategy to aim to provide a mix of urban, rural and semi-rural quays all within a 30 minute cruising time around the river and broads system. Officers in developing the Development Policies DPD and in determining applications can have regard to this strategy and the background research. The Moorings Strategy survey data has also been used in a strategic context on the Core Strategy key diagram.
- 5.23 A key issue for the Development Policies DPD has been the policy concerning residential moorings. When this policy is adopted, this will be important in setting criteria for some of the most contentious issues relating to navigable waterways.

Landscape

- 5.24 The character of the landscape means that proposed development which might initially appear to be small scale, could have a significant impact when viewed from a distance or across remote marshlands, for instance. The Landscape Character Assessment has been completed and is used to inform planning decisions. Issues include:

Impact of residential curtilages in conversion of rural buildings to dwellings.
Appreciation of the sensitivity of the Broads landscape.
Development on or outside the executive boundary.
Identification and protection of light sensitive areas to contribute to tranquillity.

Key policies in decisions in the year 2007/08 are shown to be:

Landscape protection and enhancement (Policy BCS1)
Residential development and local communities (BCS24)
Environmental protection (Policy BCS7)

Flood Risk

- 5.25 In order to assist Local Planning Authorities who are monitoring this indicator the Environment Agency has in previous years provided a list of the objections initially lodged on the grounds of flood defence. Where the Agency's initial objections can be overcome objections are withdrawn. The above section on Issues, Challenges and Opportunities sets out the issues the Authority has had to contend with.

Key policies in 2007/08 are shown to be:

Flood risk zones (BCS20)
Protection against flooding (BLP INF2)

Conservation

- 5.26 The current local plan has a suite of nature conservation policies with a stronger policy framework than is found in other local plans found elsewhere across the region. This is of course a reflection of the Authority's high priority to its nature conservation role. Refusal of applications for conservation reasons focuses around:

Quality and submission of adequate information with applications (eg species surveys) under policy BLP C11.
Guidance and policy support for enhancement as opposed to protection (under policies BCS1, BLP C14 and INF5) .

Recreation

- 5.27 Applications might be a means of achieving wider objectives but opportunities can be lost:

Access to and alongside the water (slipways/footpaths/views) under BLP policies TR2 and TR27.
Safeguarding of cycle paths/footpaths along narrow roads/missing links for circular routes under BLP policy TC10.
Links between villages/community facilities and moorings.
Visitor parking under BLP policy TC8
Tourism infrastructure (BLP policies TR6 – TR8 and TR19)

Residential demand

- 5.28 An analysis of those applications which are refused or withdrawn reveals pressure for inappropriate residential development. This is addressed in the Core Strategy. Issues that arise now include:

To make more explicit the constraints of flood risk (submission of flood risk assessments) and appreciation of impacts of flooding over the life of a building (BCS policy 20 and the new Supplementary Planning Document on flood risk).
Impact on the landscape/waterside/ countryside character (BCS policy 1).
Sustainability including energy efficiency and accessibility (BCS policies 7 and 18).

- 5.29 The Authority does not have a housing target to meet unlike the adjoining districts, and housing growth is met in those Districts, but outside the Broads Authority boundaries, excepting a few special circumstances.

Renewable Energy

- 5.30 Few proposals, which incorporate technologies relating to renewable energy are stand alone units and separate planning applications. The Authority has sought to increase the ability of proposals to incorporate renewable technologies in the BCS policy 7 and through the Sustainable Design Guide, which sets out ways in which the full range of proposal types can incorporate elements of renewable energy in a Broads context. New policies and guidance to promote renewable energy will be provided through the Development Policies DPD, when that is adopted.

Application of Policies

- 5.31 Policies are used when relevant, depending on the planning applications being determined by the Authority. Not every extant policy is required to be used every year. Policies are tested on appeal and the commentary of Inspectors provides a critique of their relevance. A gap previously identified was relating to tourism development and the adoption of the Core Strategy gives policy 9 to provide an overview of this, whilst a tourism strategy has been prepared and will subsequently feed into development control policies. Monitoring in future years should look at trends over a longer period in order to assess how far one year's applications are typical.
- 5.32 All Core Strategy and Broads Local Plan policies that are currently valid are being implemented when necessary. As the current local plan policies will discontinue their 'saved' status when the Development Policies DPD is adopted, a schedule of 'saved' policies and their successor policies will be maintained on our website, www.broads-authority.gov.uk.

Chapter 6

CONCLUSIONS

AMR Conclusions

- 6.1 The following conclusions can be drawn from this Annual Monitoring Report for 2007/08
- The Local Development Scheme (LDS) does not need further review, following the review in early 2007, until preparation of new documents becomes necessary.
 - The production of the Development Policies DP Document has slipped compared with the current LDS
 - A full assessment on the implementation of the Core Strategy and the Development Policies DPD (if adopted) will be available in next year's report.
 - There is no need to review the SCI at this stage following the review of consultation processes in chapter 3 of this report.
 - Business Development.
The tourism strategy will provide guidance on the policy objectives of provision of tourism infrastructure, access to the waterways, retention of specialist skills and employment.
 - Transport.
The Authority will work jointly with the two county councils on the Broads chapter of the Local Transport Plan.
 - Local Services (retail, leisure, open space etc).
See reference to tourism strategy above.
 - Flood Protection and Water Quality.
Greater consistency is expected now that the Supplementary Planning Document has been adopted with advice from the Environment Agency. The Broads Authority has a water quality partnership (including representation from the Environment Agency, Anglian Water and Natural England) and planning policy development has been and will continue to be a key topic for discussion in this forum.
 - Biodiversity.
Priority is to improve the quality of SSSIs with improvements in water quality and management of natural resources
 - Renewable Energy.
The core strategy provides support for more responsible use of resources in developments, whilst the Development Policies DPD will give detailed guidance on standards that developers will be expected to apply.
 - Gypsy and Traveller Issues.
This issue is primarily a matter for the constituent District councils
 - Other Relevant Local Indicators.
These are being formulated in conjunction with the monitoring requirements of the Broads Plan and will be reported in the next AMR.

Appendix 1

MONITORING REQUIREMENTS OF THE CORE OUTPUT INDICATORS

As the Broads Authority does not have employment or housing targets to meet through the RSS (East of England Plan), the monitoring of applications and completions has not been analysed in this way. Part of the Broads Authority falls within the jurisdiction of Norwich City Council, and this includes a brownfield site on the eastern edge of Norwich which is subject to joint working and production of a joint SPD in the LDS. At present there has been limited progress on this SPD and no applications have yet come forward in this area.

From 1 April 2007 the Broads Authority began to deal with planning applications in house so the relationship with planning policy monitoring requirements is now closer and will help greatly in extending the range of reporting in future AMR's.

Core Output Indicators

BUSINESS DEVELOPMENT 1a Amount of floorspace developed for employment by type.	No development in Broads area
1b Amount of floorspace developed for employment by type, in employment or regeneration areas.	No specific areas identified in the adopted Local Plan or emerging Core Strategy. Area within East of Norwich plan is Regeneration Area but see above.
1c Amount of floorspace by employment type, which is on previously developed land.	No development in this category
1d Employment land available by type.	Employment land allocated is limited to the site in the East Norwich Regeneration Area.
1e Losses of employment land in (i) employment/regeneration areas and (ii) local authority area.	i) no areas allocated ii) Broads is not a local authority area but is part of 6 local authority areas
1f Amount of employment land lost to residential development.	No allocated employment sites (see above)
Relevant Core Strategy and Local Plan Policies	CS22, CS23 and BLP policies EMP1-9

<p>HOUSING</p> <p>2a Housing trajectory showing:</p> <p>(i) net additional dwellings over the previous five year period or since the start of the relevant development plan document period, whichever is the longer;</p> <p>(ii) net additional dwellings for the current year;</p> <p>(iii) projected net additional dwellings up to the end of the relevant development plan document period or over a ten year period from its adoption, whichever is the longer;</p> <p>(iv) the annual net additional dwelling requirement; and</p> <p>(v) annual average number of net additional dwellings needed to meet overall housing requirements, having regard to previous year's performance.</p>	<p>BA has a zero target to meet in terms of housing numbers in the published RSS. No new houses provided as no sites allocated, therefore target has been met.</p> <p>(ii) Net additional dwellings has not been monitored.</p>
<p>2b Percentage of new and converted dwellings on previously developed land.</p>	<p>12 or 100% (New approvals only; no monitor of development taking place)</p>
<p>2c Percentage of new dwellings completed at:</p> <p>(i) less than 30 dwellings per hectare;</p> <p>(ii) between 30 and 50 dwellings per hectare; and</p> <p>(iii) above 50 dwellings per hectare.</p>	<p>12 Dwellings Permitted / Total site area – 8050m²</p> <p>8050 divided by 12 = 670.80m² per dwelling</p> <p>(i) less than 30 dwellings per hectare; 12 or 100%</p> <p>(ii) between 30 and 50 dwellings per hectare; and 0</p> <p>(iii) above 50 dwellings per hectare. 0</p> <p>No monitor of development taking place.</p>
<p>2d Affordable housing completions.</p>	<p>No monitor of development taking place.</p>
<p>Relevant Core Strategy and Local Plan Policies</p>	<p>CS24 and BLP policies H1-15</p>
<p>TRANSPORT</p> <p>3a Amount of completed non-residential development within UCOs A, B and D complying with car-parking standards set out in the local development framework.</p>	<p>Data not available – no monitor of completed development.</p>
<p>3b Amount of new residential development within 30 minutes public transport time of: a GP; a hospital; a primary school; a secondary school; areas of employment; and a major retail centre(s).</p>	<p>Data not available</p>
<p>Relevant Core Strategy and Local Plan Policies</p>	<p>CS16, CS17 and BLP policies TC1-13</p>
<p>LOCAL SERVICES</p> <p>4a Amount of completed retail, office and leisure development.</p>	<p>16 applications of this type approved</p>
<p>4b Amount of completed retail, office and leisure development in town centres.</p>	<p>5 applications of this type approved</p>

4c Amount of eligible open spaces managed to Green Flag Award standard.	35 Hectares - Whitlingham Country Park received a Green Flag Award, Summer 2008.
Relevant Core Strategy and Local Plan Policies	CS25 and BLP policies EMP1-9, H1-15 & TR19-21
FLOOD PROTECTION AND WATER QUALITY 7 Number of planning permissions granted contrary to the advice of the Environment Agency on either flood defence grounds or water quality.	1 application objected to by EA and then approved.
Relevant Core Strategy and Local Plan Policies	CS20 and BLP policies INF 1-5
BIODIVERSITY 8 Change in areas and populations of biodiversity importance, including: (i) change in priority habitats and species (by type); and	See appendix 2
(ii) change in areas designated for their intrinsic environmental value including sites of international, national, regional, sub-regional or local significance.	
Relevant Core Strategy and Local Plan Policies	CS1, CS2, CS4 and BLP policies C1-6, C9-14, C19-21
RENEWABLE ENERGY 9 Renewable energy capacity installed by type.	No applications for commercial renewable energy schemes during 2007/08. Householder extensions and new dwelling applications have included a range of measures, such as solar panels, capacity not recorded.
Relevant Core Strategy and Local Plan Policies	CS8 and BLP policies INF 10-11
GYPSIES AND TRAVELLERS 1. Number of authorised public and private sites (both permanent and transit) and numbers of caravans on them over the period monitored, and any changes during the period.	No authorised sites in Broads area
2. Number of unauthorised sites and numbers of caravans on them	i)Cobholm Allotments, which is privately owned but has previously been used for caravans and mobile homes. Number of units estimated at 8-10. ii)Horning Village marina: unauthorized siting of several vessels'. Approx 10 units. iii) Thorpe island: unauthorized siting of several vessels. (iv) Unauthorised site with two mobile homes at Thurlton (Nov 2007) – enforcement action under way.

	(v) Unauthorised site at Broom Common between April and June 2008
3 Details of any permissions granted for new public or private sites, or expansion of existing sites, during the monitoring period; and any other unimplemented permissions outstanding at the end of the period.	No permission granted
4. Progress of any work to assess the housing needs of Gypsies and Travellers in accordance with the requirements of housing legislation and planning policy.	Not BA responsibility. Will be passed to relevant District Council.
5. More generally, an assessment of the use and performance of existing development plan policies on this issue.	Not applicable.
Relevant Core Strategy and Local Plan Policies	None

Appendix 2

LDF BIODIVERSITY INDICATORS – 2007/08 SUBMISSION

(Collated Oct 2008)

Change in areas and populations of biodiversity importance, including:

(i) change in priority habitats and species (by type) (Change based on last financial year or whatever local area figures are held for)

The following LDF Indicators have been chosen for 2007/08 as these were the species/habitats for which figures were available:

Bittern (Norfolk only)	
Population 2007/08	Min of 13 max of 20 booming males and 6 nests
Change since 2006/07	Increase of up to 4 booming males

Najas marina (Broads)	
Number of broads with N. marina recorded over a 3 year period (2005-2007)	21

Fen Orchid (Specific sites in the Broads)	
Counts of Fen Orchid at recorded sites (2007)	Catfield – no count Sutton – no count Upton – 108 Ranworth - 18

Water Vole (Specific sites in the Broads)

Indicators of Water Vole numbers in 2007

Hickling

209 individual feeding signs recorded
17 out of 36 transects with positive record

Bure Marshes

46 individual feeding signs recorded
13 out of 20 transects with positive record

Change since 2006

Hickling

Reduction in feeding signs of 13
Reduction in positive transects of 4

Bure Marshes

Reduction in feeding signs of 17
Increase in positive transects of 2

Lakes (Broads)

Area and % of broads in Phase 1 or Phase 2 ecological condition (2007/08)

213ha (25%)

Area and % of broads undergoing restoration (2007/08)

225ha (27%)

Grazing Marsh (Broads)

Loss of grazing marsh area through BESL flood alleviation works (2007/08)

114.73ha

APPENDIX 3

SUSTAINABILITY INDICATORS AS SET OUT IN THE SUSTAINABILITY APPRAISAL ENVIRONMENTAL REPORT – MONITORING FRAMEWORK (TABLE 8.1)

Indicators	When	Who	Where	Threshold/Target Criteria
Number and extent (ha) designed sites for nature conservation: <ul style="list-style-type: none"> • Ramsar • Special Areas of Conservation • Special Protection areas • Special Sites of Scientific Interest • National Nature Reserves • Local Nature Reserves 	Annually – July	English Nature	www.englishnature.org.uk	No reduction in total area or destruction of area (Statutory)
% of SSSIs in favourable or recovering condition	Annually – July	English Nature	www.englishnature.org.uk	If condition favourable or recovering falls below 95% by 2010 (English Nature PSA target 2010)
Total area (ha) of fen in favourable ecological condition/under appropriate management	Annually	Broads Authority	Broads Authority Business Plan	No decline below 2,875ha (BA B2)
Total area and % of the Broads managed in line with the Authority's conservation objectives	Annually	Broads Authority	Broads Authority Business Plan	No decline below 56% (BA B5,B6)
Countryside Quality Counts: % land having marked changes inconsistent with character	new data set expected 2007	DEFRA	www.cqc.org.uk	No decline below baseline
Agricultural land classifications: <ul style="list-style-type: none"> • Grade 1 • Grade 2 • Grade 3 • Grade 4 • Non agricultural • Urban 	Once	DEFRA	www.magic.gov.uk	No decline below baseline
% of new homes built on previously	Annually	Broads	Broads Authority Business	Should not fall below 80% by 2008/09

Indicators	When	Who	Where	Threshold/Target Criteria
developed land		Authority	Plan	(BV 106)
% of listed buildings 'at risk'	Annually	" "	" "	8% by 2008/09 (BA B8)
% of listed buildings 'at risk' rescued through Broads action	Annually	" "	" "	13% by 2008/09 (NPA CH3(b))
% of conservation areas with published management proposals	Annually	Broads Authority	Broads Authority Business Plan	35% by 2008/09 (BV 219 c)
% conservation areas with an up to date character appraisal	Annually	Broads Authority	Broads Authority Business Plan	55% by 2008/09 (BV 219 b)
Number of Conservation Areas	Annually	Broads Authority	Broads Authority Business Plan	No reduction in number target 20 for 2008/09 (BV 219 a)
% of Chemical River Quality Grade B or above (good or very good)	Annually	Environment Agency	On request	If chemical quality falls below 91% grade B or above
% of Biological River Quality Grade B or above (good or very good)	Annually	Environment Agency	On request	If biological quality falls below 91% grade B or above
% of broads with good water quality	Unknown	Natural England/ Environment Agency (BA)	Water Quality Partnership	No decrease
CO2 emissions by sector tonnes (%): <ul style="list-style-type: none"> • Commercial, Institutional and Residential Combustion • Industrial Combustion • Road Transport • Other Transport • Waste Treatment and Disposal • Agriculture • Nature • Individual Point Sources 	Every other year	National Atmospheric Emissions Inventory	www.naei.org.uk	No increase in total CO2 emissions – should work towards 20% reduction by 2010 Norfolk County Council has a linear reduction target for a 10% decrease in transport emissions by 2010
CO2 Emissions per capita (tonnes)	Every other year	Broads Authority to calculate	www.naei.org.uk	No increase, should work towards a 20% reduction by 2010
Number of Air quality Management Areas	Annually - summer	District Councils	On request	No increase in the number of AQMAs, as all location in the Broads Area currently meet threshold objectives for all air pollutants

Indicators	When	Who	Where	Threshold/Target Criteria
Transport by mode all weekday journeys (Broadland): <ul style="list-style-type: none"> • Walking • Cycling • Public Transport • Power Two Wheeler • Homeworking • Car 	Annually	Norfolk County Council	www.norfolk.gov.uk Transport Monitoring Report	<ul style="list-style-type: none"> • No decrease in walking • No decrease in cycling • No decrease in public transport • No decrease PTW • No decrease in homeworking • No increase car
% Traffic growth per annum Broads Area	Annually	Norfolk County Council	www.norfolk.gov.uk Transport Monitoring Report	Reduce traffic growth or limit to current levels at 2.5% per annum
Number of passengers on Broads Authority sustainable boat trips	Annually	Broads Authority	Broads Authority Business Plan	10,000 by 2008/09 (BA C6)
Length of path improved to allow easier access for those with disabilities	Annually	Broads Authority	Broads Authority Business Plan	20% by 2008/09 (BA C1)
Number of people killed or seriously injured in road traffic accidents	Annually	Norfolk County Council and Suffolk County Council	Norfolk County Council and Suffolk County Council Local Transport Plan Progress Reports	Reduce
% Employment level	Every 10 years	Census	www.statistics.gov.uk	No decrease in employment levels
Total number of volunteer days spent on projects led and/or supported by the Broads Authority	Annually	Broads Authority	Broads Authority Business Plan	4200 by 2008/09 (BA C4)
Number of community volunteer groups supported by the Authority	Annually	Broads Authority	Broads Authority Business Plan	14 by 2008/09 (BA C5)
Estimated no. of Visitor Days	Every 5 years	Natural England /Defra	Broads Authority Business Plan	No decline below baseline
Estimated visitor spend	Every 5 years	Natural England /Defra	Broads Authority Business Plan	No decline below baseline

Indicators	When	Who	Where	Threshold/Target Criteria
Length of navigable waterway	Annually	Broads Authority	Broads Authority Business Plan	No decline below baseline
% of footpaths/rights of way that are easy to use by the public	Annually	Broads Authority	Broads Authority Business Plan	85% by 2008/09 (NPA RM1)
% of land within the Broads open for public access	Annually	Broads Authority	Broads Authority Business Plan	2.4% by 2008/09 (BA C3)
Length of frontage provided for public short term/overnight mooring owned or operated by the Authority	Annually	Broads Authority	Broads Authority Business Plan	7,200m by 2008/09 (BA D4)

To monitor the environmental effects of the Core Strategy the following indicators were established in the SA Environmental Report:

SEA Topic	Indicators	Baseline	Comparator (Benchmark, trend or target)	Baseline Assessment
Biodiversity, flora, fauna	Number and extent (ha) of designated sites for nature conservation: <ul style="list-style-type: none"> • Ramsar • Special Areas of Conservation • Special Protection areas • Special Sites of Scientific Interest • National Nature Reserves • Local Nature Reserves 	<ul style="list-style-type: none"> • 2 (6691.55) • 2 (6291.54) • 3 (6815.24) • 29 (7461) • 8 (2257.09) • 1 (375) 	Large proportion of the Broads Executive area is protected as designated nature conservation sites.	√√
Biodiversity, flora, fauna	% of SSSIs in favourable or recovering condition	81%	English Nature/DEFRA PSA target to improve condition of SSSI to 95% in good or favourable recovering condition by 2010. Norfolk is 82%.	√
Biodiversity, flora, fauna	Total area (ha) of fen in favourable ecological condition/under appropriate management	2,875ha	Broads Authority target for 2005/06 was surpassed.	√√
Biodiversity, flora, fauna	Total area and % of the Broads managed in line with the Authority's conservation objectives	16,725 ha (56%)	Broads Authority target for 2005/06 was surpassed.	√√

SEA Topic	Indicators	Baseline	Comparator (Benchmark, trend or target)	Baseline Assessment
Landscape	Countryside Quality Counts: % land having marked changes inconsistent with character	0%	Currently at the highest achievable rate, and exceeds Norfolk as a whole, which is 14%.	√√
Landscape, soil	Agricultural land classifications: <ul style="list-style-type: none"> • Grade 1 • Grade 2 • Grade 3 • Grade 4 • Grade 5 • Non agricultural • Urban 	<ul style="list-style-type: none"> • 3% • 15% • 53% • 15% • 0% • 6% • 8% 	Norfolk comparative data: <ul style="list-style-type: none"> • 3% • 14% • 48% • 14% • 8% • 5% • 7% 	0
Landscape	% of new homes built on previously developed land	84%	Broads Authority target for 2005/06 of 80% surpassed.	√√
Cultural Heritage	% of listed buildings 'at risk'	9%	Broads Authority target for 2005/06 of 8% not met.	X
Cultural Heritage	% of listed buildings 'at risk' rescued through Broads action	5%	Broads Authority target for 2005/06 of 9% not met by a significant amount.	XX
Cultural Heritage	% of conservation areas with published management proposals	15.8%	Broads Authority target for 2005/06 met.	√
Cultural Heritage	% conservation areas with an up to date character appraisal	15.8%	Broads Authority target for 2005/06 met.	√
Cultural Heritage	Number of Conservation Areas	19	Broads Authority target for 2005/06 met.	√
Water	% of Chemical River Quality Grade B or above (good or very good)	25%	Nationally, Environment Agency target for 2006 is for 91% of Chemical River Quality to be Grade B or above	XX
Water	% of Biological River Quality Grade B or above (good or very good)	87%	Nationally, Environment Agency target for 2006 is for 91% of Biological River Quality to be Grade B or above	√
Water	% of broads with good water quality	5		

SEA Topic	Indicators	Baseline	Comparator (Benchmark, trend or target)	Baseline Assessment
Climate	CO2 emissions by sector tonnes (%): <ul style="list-style-type: none"> Commercial, Institutional and Residential Combustion Industrial Combustion Road Transport Other Transport Waste Treatment and Disposal Agriculture Nature Individual Point Sources 	82,298 <ul style="list-style-type: none"> 12206 (15%) 3613 (4%) 17224 (21%) 477 (1%) 185 (<1%) 462 (1%) 5231 (6%) 42900 (52%) 	Total CO2 emissions in Norfolk 1,949,585 <ul style="list-style-type: none"> 21% 8% 26% 1% <1% 1% 10% 33% 	0
Climate	CO2 Emissions per capita (tonnes)	14.0	Norfolk carbon dioxide emissions per capita are 0.68.	XX
Air	Number of Air quality Management Areas	0	4 AQMAs in Norfolk, 4 AQMAs in Suffolk.	√√
Climate, Air	Transport by mode all weekday journeys (Broadland): <ul style="list-style-type: none"> Walking Cycling Public Transport Power Two Wheeler Homeworking Car 	<ul style="list-style-type: none"> 12% 3% 9% 1% 1% 74% 	Norfolk county data: <ul style="list-style-type: none"> 19% 4% 9% 1% 1% 67% 	X
Climate, Air	% Traffic growth per annum Broads Area	2.5%	Norfolk County average traffic growth is 2.3% per annum.	X
Climate, Air	Number of passengers on Broads Authority sustainable boat trips	9882	Broads Authority target for 2005/06 of 10,000 not met	X

SEA Topic	Indicators	Baseline	Comparator (Benchmark, trend or target)	Baseline Assessment
Population	Length of path improved to allow easier access for those with disabilities	13%	Broads Authority target for 2005/06 of 10% surpassed, and well on its way to meeting 2006/07 target of 15%.	√√
Population	% Employment level	61%	National employment level at 60.6%	√
Population	Total number of volunteer days spent on projects led and/or supported by the Broads Authority	4,404	Broads Authority target for 2005/06 of significantly surpassed.	√√
Population	Number of community volunteer groups supported by the Authority	12	Broads Authority target for 2005/06 met.	√
Human Health	Number of people killed or seriously injured in road traffic accidents	5	KSI in Broads has decreased by 29% between 2002-2005.	√√
Material Assets	% of footpaths/rights of way that are easy to use by the public	78%	Broads Authority target for 2005/06 not met and is a reduction on previous year.	XX
Material Assets	% of land within the Broads open for public access	1.6%	Broads Authority target for 2005/06 met, an increase on previous year and moving toward next target.	√
Material Assets	Length of frontage provided for public short term/overnight mooring owned or operated by the Authority	5,969.1m	Broads Authority target for 2005/06 not met by significant amount.	XX
Material Assets	Estimated no. of Visitor Days	5.4million	No trend/ comparator available.	?
Material Assets	Estimated visitor spend	£120.5m	No trend/ comparator available.	?
Material Assets, Water	Length of navigable waterway	190 km	No trend/ comparator available.	?

APPENDIX 4

PLANNING APPLICATIONS OBJECTED TO BY THE ENVIRONMENT AGENCY ON FLOOD RISK GROUNDS. (Source: EA website and decision verified by BA.)

An extract from Environment Agency - South England - objections to planning applications on flood risk grounds 2006/07

Below a list of the objections lodged on Flood Risk Grounds to assist Local Authorities who are doing their annual monitoring reports. The list is designed to be as inclusive as possible and produced yearly. It is not updated to take account of any additional comments/consultation responses after the initial objection.

The "Reasons for Agency Objection" referred to in this document are:

Adverse Impact on Surface Water Run-Off	If the quantity surface water run-off from the site is likely to be changed for the worse we use this objection
Culverting (Flood Risk) or Culverting Proposals	Culverts can back up flows in a watercourse in times of flood. We use this objection if this is an issue on the site
Insufficient Info - Flood Risk	We use this when we do not have enough information to assess the risk properly
Loss of access to the development	We use this objection when the Environment Agency needs access to the development site to undertake our statutory duties and believe this access is threatened
Loss of Flood Storage	We use this objection when the development is likely to push flood waters elsewhere
Loss/Restricted Access to Watercourse	The Environment Agency has statutory duties to maintain some watercourses. We use this objection if the access to the watercourse to undertake these duties is threatened by a development
No Dry Access	It is important to get access to buildings at all times in case of emergency, and we use this objection where there is no way to do this
PPG25/TAN15 - Request for FRA or PPG25/TAN15 - Request for FRA/FCA	PPG 25 (Planning Policy Guidance 25) and its replacement PPS25 (Planning Policy Statement 25) which apply in England and TAN15 (Technical Advice Note 15) applies in Wales. They require a Flood Risk Assessment, or Flood Consequence Assessment in Wales, for a development before planning permission is granted. If this has not been provided then we use this objection.
Risk of Flooding or Risk to the Development	Generic objections used to indicate that the site is at risk of being inundated with flood water
Risk to Flood Defences	We use this objection when existing flood defences may be compromised by the development
Site Liable to Erosion	If the site is likely to erode then we use this objection
Unsatisfactory FRA Submitted or Unsatisfactory FRA/FCA Submitted	We use this objection when the technical assessment of the FRA/FCA shows it to be inadequate

APPENDIX 4**TABLE A**

EA ref No	Authority	Applic No.	Nature of Proposed Development	Reason for Objection	Broads A consideration
464	Broads Authority	2007/0227/FUL	Residential Schemes - Major	<ul style="list-style-type: none">• Adverse impact on surface water run-off• Loss of flood storage	Application withdrawn
465	Broads Authority	2007/0070/OUT	Caravan Sites - major	<ul style="list-style-type: none">• Adverse impact on surface water run-off• PPS25 – request for FRA/FCA	Application withdrawn
466	Broads Authority	2007/0229/FUL	Residential – minor	<ul style="list-style-type: none">• Adverse impact on surface water run-off• Risk to the development	Approved with conditions which are intended to satisfy EA objection
467	Broads Authority	2007/0279/FUL	Other - Minor	<ul style="list-style-type: none">• Insufficient info – flood risk	Approved with conditions
468	Broads Authority	2007/0073/FUL	Residential - minor	<ul style="list-style-type: none">• Insufficient info – flood risk• Loss of flood storage• Risk to the development• Unsatisfactory FRA/FCA submitted	Application withdrawn
469	Broads Authority	2007/0035/OUT	Residential - minor	<ul style="list-style-type: none">• Insufficient info – flood risk• Part C of Exception Test not passed• Sequential Test not adequately demonstrated	Application withdrawn

				<ul style="list-style-type: none"> • Unsatisfactory FRA/FCA submitted 	
470	Broads Authority	2007/0082/FUL	Other - Minor	<ul style="list-style-type: none"> • Insufficient info – flood risk • PPS25 – request for FRA/FCA 	Application withdrawn
471	Broads Authority	20070011 PF	Residential - minor	<ul style="list-style-type: none"> • Insufficient info – flood risk • Risk to the development 	Approved with conditions
472	Broads Authority	2007/0020/FUL	Residential - minor	<ul style="list-style-type: none"> • Insufficient info – flood risk • Risk to the development 	Application withdrawn
473	Broads Authority	2007/0004/FUL	Offices/ Light Industry - minor	<ul style="list-style-type: none"> • Insufficient info – flood risk • Risk to the development 	Application withdrawn
474	Broads Authority	2007/0016/FUL	Residential - minor	<ul style="list-style-type: none"> • Insufficient info – flood risk • Risk to the development 	Approved with conditions. EA response only received after statutory deadline and after decision.
475	Broads Authority	2007/0072/FUL	Other - Major	<ul style="list-style-type: none"> • Insufficient info – flood risk • Unsatisfactory FRA/FCA submitted 	Application withdrawn
476	Broads Authority	2007/0224/FUL	Other - Minor	<ul style="list-style-type: none"> • Loss of flood storage 	Approved with conditions which are intended to satisfy EA objection
477	Broads Authority	2007/0038/FUL	Other - Major	<ul style="list-style-type: none"> • Loss of flood storage 	Approved with conditions which are intended to satisfy EA objection
478	Broads Authority	2008/0060/FUL	Other - Minor	<ul style="list-style-type: none"> • Loss of flood storage 	Approved with conditions

479	Broads Authority	2007/0177/FUL	Other - Major	<ul style="list-style-type: none"> • Loss of flood storage • Risk to the development 	Approved with conditions which are intended to satisfy EA objection
480	Broads Authority	2007/0115/CU	Other - Minor	<ul style="list-style-type: none"> • Loss of flood storage • Risk to the development 	Refused
481	Broads Authority	2007/0313/FUL	Residential – minor	<ul style="list-style-type: none"> • Part C of Exception Test not satisfied. 	Approved with conditions which are intended to satisfy EA objection
482	Broads Authority	2007/0310	Mixed Use - Minor	<ul style="list-style-type: none"> • PPS25 – Request for FRA/FCA • Sequential test not adequately demonstrated 	Refused
483	Broads Authority	2007/0251/FUL	Residential - minor	<ul style="list-style-type: none"> • Risk to the development 	Approved with conditions which are intended to satisfy EA objection
484	Broads Authority	2008/0021/FUL	Residential - minor	<ul style="list-style-type: none"> • Risk to the development 	Approved with conditions which are intended to satisfy EA objection
485	Broads Authority	2007/0067/FUL	Residential - minor	<ul style="list-style-type: none"> • Risk to the development 	Approved with conditions which are intended to satisfy EA objection
486	Broads Authority	2007/0312/FUL	Residential - minor	<ul style="list-style-type: none"> • Risk to the development 	Approved with conditions which are intended to satisfy EA objection
487	Broads	2007/0308/FUL	Offices/ Light	<ul style="list-style-type: none"> • Risk to the development 	Approved with

	Authority		Industry - Minor		conditions which are intended to satisfy EA objection
488	Broads Authority	2007/0100/FUL	Recreational Schemes - major	<ul style="list-style-type: none"> • Risk to the development 	Approved with conditions which are intended to satisfy EA objection
489	Broads Authority	2007/0088/FUL	Residential - minor	<ul style="list-style-type: none"> • Risk to the development 	Refused
490	Broads Authority	2007/0031/FUL	Residential - minor	<ul style="list-style-type: none"> • Risk to the development 	Approved with conditions which are intended to satisfy EA objection
491	Broads Authority	2007/0060/FUL	Other - Minor	<ul style="list-style-type: none"> • Risk to the development 	Approved with conditions which are intended to satisfy EA objection
492	Broads Authority	2007/0252/FUL	Residential - minor	<ul style="list-style-type: none"> • Risk to the development • Sequential test not adequately demonstrated 	Application withdrawn
493	Broads Authority	2007/0156/FUL	Residential - minor	<ul style="list-style-type: none"> • Risk to the development • Unsatisfactory FRA/FCA submitted 	Application withdrawn
494	Broads Authority	2007/0316/FUL	Residential - minor	<ul style="list-style-type: none"> • Sequential test not adequately demonstrated • Unsatisfactory FRA/FCA submitted 	Refused
495	Broads Authority	2007/0186/FUL	Residential - minor	<ul style="list-style-type: none"> • Sequential test not adequately demonstrated • Unsatisfactory FRA/FCA 	Application withdrawn

				submitted	
496	Broads Authority	2007/0216/FUL	Residential - minor	<ul style="list-style-type: none"> • Sequential test not adequately demonstrated • Unsatisfactory FRA/FCA submitted 	Refused
497	Broads Authority	2007/0232/FUL	Residential - minor	<ul style="list-style-type: none"> • Sequential test : vulnerability not appropriate to flood zone 	Withdrawn
498	Broads Authority	2008/0003/FUL	Residential - minor	<ul style="list-style-type: none"> • Unsatisfactory FRA/FCA submitted 	Approved with conditions which are intended to satisfy EA objection
499	Broads Authority	06/06/1065	Residential - minor	<ul style="list-style-type: none"> • Risk to the development 	Approved with conditions which are intended to satisfy EA objection